

COMMERCIAL SERIES

SÉRIES COMMERCIAL
SERIE COMMERCIAL



OWNER'S MANUAL AND USER GUIDE

GUIDE DEL L'UTILISATEUR ET DU PROPRIETAIRE
MANUAL DEL PROPIETARIO Y GUIA DEL USUARIO

TABLE OF CONTENTS

SECTION 1 - IMPORTANT SAFEGUARDS	1
SECTION 2 - UNPACKING.....	3
SECTION 3 - GETTING TO KNOW YOUR BLENDER.....	3
SECTION 4 - INSTALLATION & OPERATIONAL OVERVIEW	4
4.1 - STEALTH 895™	4
4.2 - STEALTH 875™ & STEALTH 885™	16
4.3 - CONNOISSEUR 825™	28
4.4 - CHEF 775™	40
4.5 - EZ 600™	42
4.6 - CHEF 600™	44
SECTION 5 - CARE AND CLEANING	46
SECTION 6 - TROUBLESHOOTING.....	46
SECTION 7 - WARRANTY	50
APPENDIX A - COUNTERTOP HOLE TEMPLATE.....	53

FRANÇAIS-GUIDE DE L'UTILISATEUR ET DU PROPRIÉTAIRE.....	55
ESPAÑOL-MANUAL DEL PROPIETARIO Y GUIA DEL USUARIO.....	99

SECTION 1: IMPORTANT SAFEGUARDS

IMPORTANT INFORMATION

Read all instructions carefully before using your Blendtec® blender.

Following these instructions will help prevent injuries and damage to the machine and will ensure that you have the best possible experience with your new Blendtec® blender.

1.1 SAFETY CERTIFICATION

The Commercial series blenders are certified to required safety standards.

This certification ensures that your Commercial series blender has been tested for electrical and mechanical safety. The safety standards have been developed over many years to prevent injury, fire and damage. Part of the certification process includes quarterly audits to ensure that Blendtec is producing equipment to these stringent criteria.

1.2 AVOID CONTACT WITH MOVING PARTS

- ALWAYS keep fingers, hands, hair and clothing away from all moving parts.
- ALWAYS keep all utensils away from the drive socket and blender jar blades during operation as utensils may damage blades or the blender jar.
- NEVER put hands into the blender jar or add substances by hand when the blender jar is on the motor base.
- NEVER touch the blade with your fingers whether it is on or off the motor base.
- NEVER place jar into drive socket if blender motor is operating.
- DO NOT rock or remove the blender jar during operation.

These precautions will prevent personal injury and/or damage to the blender.

1.3 NEVER OPERATE THE BLENDER IF IT APPEARS DAMAGED

If the blender malfunctions, call your service agent first. If it is dropped or damaged in any way, return the blender to a Blendtec service agent immediately for examination, repair, electrical or mechanical adjustment, or possible replacement.

1.4 NEVER OPERATE BLENDER IN LIQUID

To protect against the risk of electrical shock do not put the motor base in water or other liquid. Do not use the blender outdoors where it is subject to precipitation.

1.5 NEVER PUT NON-FOOD ITEMS INTO JAR

Utensils, rocks, and glass are dangerous if placed in jar. Damage caused by such foreign objects will void the warranty. Keep hands and utensils out of jar while blending to reduce the risk of severe injury to persons or damage to the blender. Utensils may only be used when the blender is not running.

1.6 NEVER OPERATE THE BLENDER WITHOUT THE LID IN PLACE

1.7 NEVER OPERATE THE BLENDER USING ATTACHMENTS NOT SOLD BY BLENDTEC

The use of any unauthorized attachments may cause fire, electric shock, and/or injury and will void the warranty.

1.8 BLENDER JAR MUST BE PROPERLY IN PLACE WHILE APPLIANCE IS OPERATING

1.9 USE CAUTION WHEN BLENDING HOT LIQUIDS

Your Commercial series blender may have a vented lid that acts as a pressure relief to allow steam to escape. Be careful not to come in contact with any steam.

1.10 POWER CORD PRECAUTIONS

- NEVER operate with a damaged cord or plug. If the supply cord is damaged it must be replaced by the manufacturer or authorized service agent to avoid a hazard.
- DO NOT permit the cord to hang over the edge of the work surface.
- NEVER use an extension cord with the unit.
- Unplug the blender motor when not in use, before changing blender locations, or when cleaning.

EACH POWER UNIT MUST BE PROTECTED BY A SEPARATE CIRCUIT BREAKER OR FUSE, SEE MODEL FOR SPECIFICATIONS

1.11 NEVER ATTEMPT TO REPAIR THE POWER UNIT

Never remove the blender motor cover. The blender motor does not contain user-adjustable or serviceable parts. A qualified service agent must make all service adjustments. Removing the cover or attempting to service the blender will void the warranty.

1.12 TURN THE BLENDER OFF WHEN NOT IN USE

1.13 AVOID TOUCHING THE BLENDER DRIVE SOCKET OR JAR SHAFT AFTER USE!

The blender drive socket and jar shaft may become very hot after blend cycles.

1.14 SAFETY

This appliance is not intended for use by persons (including children) with lack of experience and knowledge, unless they have been given supervision or instruction concerning use of the appliance by a person responsible for their safety. Children should be supervised to ensure that they do not play with the appliance.

1.15 NEVER OPERATE THE BLENDER WITH MORE THAN THE MARKED CAPACITY OF THE JAR

SECTION 2: UNPACKING

SAVE ALL PACKAGING MATERIALS AND INSTRUCTIONS FOR FUTURE USE

2.1 UNPACKING YOUR BLENDER

You should have received the following items:

- Commercial series blender motor base
- One or more blender jars with lid and sound enclosure*
- Additional literature may be included depending on package configuration.

*Sound enclosure is available only on the Stealth 875™, Stealth 885™ and Connoisseur 825™ models.

1. Remove blender motor base, blender jar, lids and sound enclosure (if included with model) from packaging.
2. Unwind the power cord.
3. Check for any packing material that may have blocked ventilation holes on the underside of the blender motor base.
4. Inspect all items to ensure no damage occurred during shipment.
5. If any damage has occurred, contact your Blendtec service agent immediately.

2.2 RECORDING YOUR SERIAL NUMBER AND DATE OF PURCHASE

Record your blender motor serial number and date of purchase in the space below. You will need these when contacting Blendtec for service or questions.

Motor Serial # (Found on bottom of motor base): _____

Date of Purchase: _____

Purchased From: _____

2.3 REGISTERING YOUR BLENDER

Register online at www.blendtec.com/registration

SECTION 3: GETTING TO KNOW YOUR BLENDER

3.1 BLENDER MOTOR BASE

- Smart Touch Interface: Varying models consist of preprogrammed cycles, incremental speed cycles, timed cycles, a Stop button and a Pulse button.
- Hardened Metal Drive Socket: This is where the jar couples with the motor to turn the blade assembly; made of hardened metal.
- Information Center: This displays the number of times a blend cycle button has been pressed. It also indicates overload or over-temperature conditions.
- Power Unit: This unit is located within the blender motor base and contains the computerized electronics that run the blender.
- Motor Base Cover: Houses the power unit in a durable, plastic material.
- Power Cord: The power cord is located at the back of the motor base cover.

3.2 BLENDER JAR ASSEMBLY

The blender jar assembly consists of the blender jar, blade assembly, and lid. These components are integrated to ensure consistently blended drinks and greater operator safety.

- Lid: The lid seals liquids within the jar during blending. Some models have a vent that provides pressure relief when blending hot foods.
- Jar: Your jar is durable, BPA-free, and easy to clean.
- Blade Assembly: The uniquely designed stainless steel blade provides fast, consistent blending.

NOTE: Never operate the blender with more than the marked capacity of the jar.

3.3 POWER SPECIFICATIONS

Your Commercial series blender is certified for use with a specific circuit voltage, depending on model. Make sure to check your model's power specifications and use a protected circuit when operating your unit.

SECTION 4: INSTALLATION & OPERATIONAL OVERVIEW

4.1 STEALTH 895 NBS™

4.1.1 Installation

Stealth Above Counter Installation

- Select a location that is near an electrical outlet. Also consider proximity to ingredients, and patrons as well as available counter space.
- Place the blender on the counter in a spot where the air intake vents on the sides and exhaust on the back of the blender are unobstructed.
- Ensure there is enough room above and around the unit to allow for unhampered movement of the sound enclosure (see Figure 1 for measurements).
- Plug the unit into an outlet with appropriate electrical protection.

Stealth In-Counter - Preparation for Installation

Note: You may locate your Blendtec Stealth in the same space as your previous Blendtec in-counter blender. Just remember to ensure proper spacing for the sound enclosure (see Figure 1 for measurements).

- Identify the desired blender location. Consider proximity to ingredients, and patrons as well as available counter space. Also ensure that an electrical outlet is readily accessible.
- Ensure the location meets all dimensional requirements (see Figures 1 and 3).
- The countertop can be no thicker than ¾" (1.9 cm). A thicker countertop will obstruct motor ventilation.

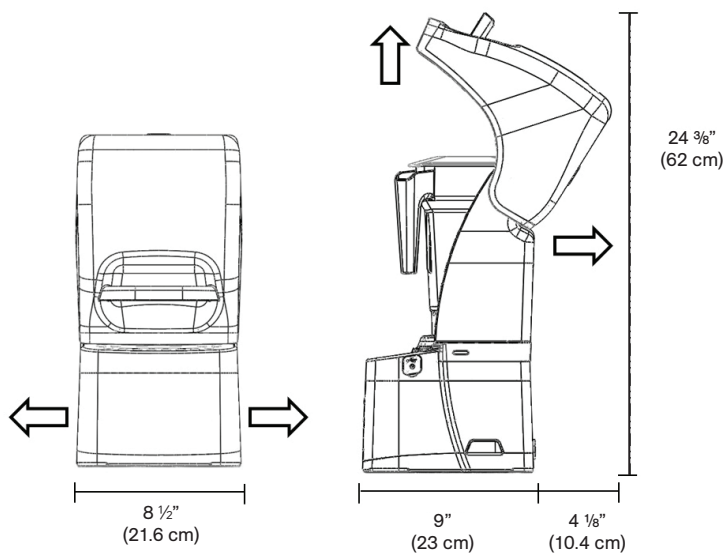


Figure 1. Stealth Dimensions

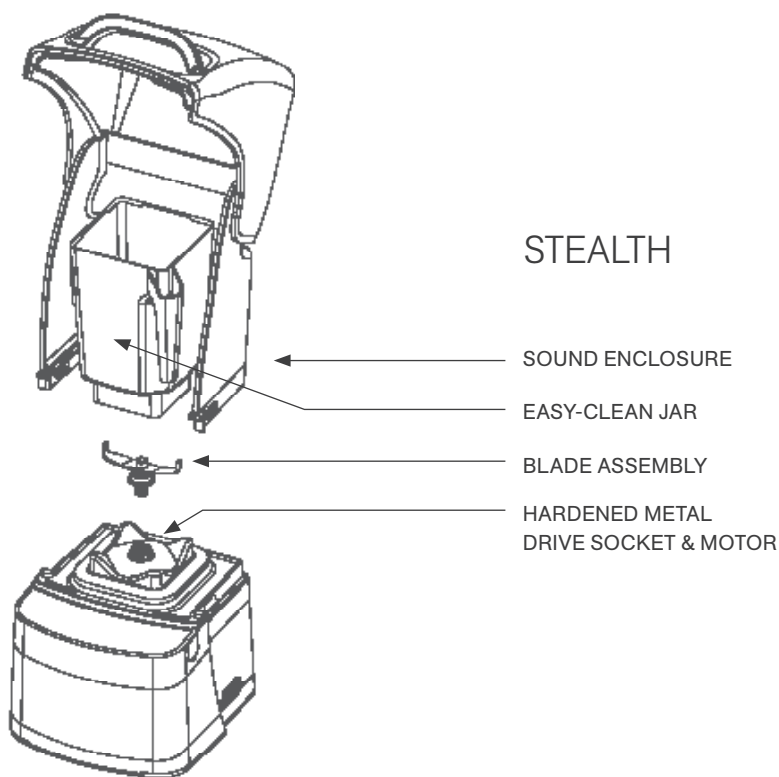


Figure 2. Stealth Components

- If installing more than one blender, allow 14"–16" (35.6 - 40.6 cm) of center-to-center blender spacing.
- If installing a sound enclosure, allow a clearance of at least 5 ½" (14 cm) from the sound enclosure to the wall and 26" (66 cm) from the countertop to any over-the-counter cabinetry.
- Ensure lower cabinetry allows adequate airflow.
 - The blender draws ambient air into the vent holes located on the lower back of the motor and then evacuates hot air through the vents located on the lower front and sides of the motor. For the motor to cool properly, a sufficient amount of air must be able to circulate around the motor.
 - There should be at least 6 ½" (16.5 cm) of space from the countertop to the next lower shelf of the cabinet, leaving a minimum space of 3" (7.6 cm) between the bottom of the motor and the lower shelf. Cabinetry should not be closed; it should allow air to flow freely from the outside to the inside of the cabinet space.
 - Plastic bags, cups, and so forth, should not be stored closer than 3" (7.6 cm) from the bottom of the motor.
- Cut a hole in the countertop 4 ¾" (11.1 cm) wide and 5 7/8" (14.9 cm) long (see the countertop hole template in Appendix A). Ensure that the 4 ¾" (11.1 cm) sides are parallel with the machine operator.

Note: Double check to ensure that all space requirements and measurements are correct BEFORE cutting.

In-Counter Installation

- Feed the electrical cord through the hole in the countertop.
- Gently place the blender unit into the hole.
- Ensure the gasket is seated correctly, lying flat against the counter surface and not pinched by the housing.
- Plug the unit into an outlet with appropriate electrical protection.

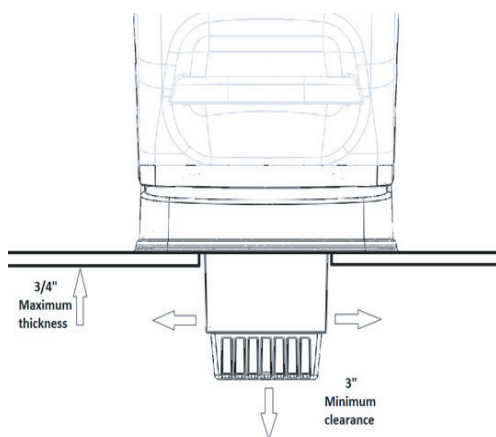
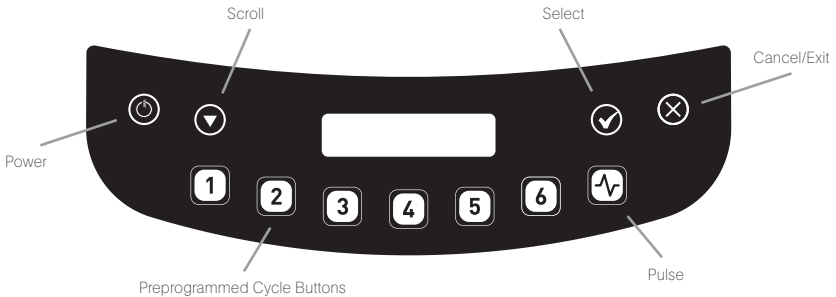


Figure 3. Stealth In-Counter Clearance

4.1.2 Stealth 895NBS™ Quick Start Guide

1. Touch the power icon to turn on the blender.
2. Raise the sound enclosure lid.
3. Place the blender jar on the motor base, ensuring the jar is completely seated and the jar lid is secured.
4. Close the sound enclosure lid.
5. On the control surface, touch the desired blend cycle number, pulse icon or desired location on the slider control bar.
6. To stop a blend cycle before the programmed time elapses, press the cancel/exit button. If you have enabled the Blend Cycle Pause feature, press the previously selected blend cycle button to pause the cycle. To resume the paused cycle, press the previously selected blend cycle button again.



4.1.3 Automatic Cycle Operation

Your Stealth blender is preprogrammed with multiple blender profiles to help operators achieve consistent blends with a minimum of training, trial, and error. You can select from the following profiles and blend cycles:

Default Profile

- Button 1: Nitro 20 sec.
- Button 2: Nitro 30 sec.
- Button 3: Small Margarita / Ice Cappuccino
- Button 4: Medium Smoothie 4
- Button 5: Large Smoothie 4
- Button 6: Granita Medium Milkshake

Multipurpose Profile*

- Button 1: Small Milkshake
- Button 2: Granita / Medium Milkshake
- Button 3: Small Margarita / Ice Cappuccino
- Button 4: Medium Smoothie 4
- Button 5: Large Smoothie 4
- Button 6: 50 Seconds @ Speed 7

*When you turn the blender on for the first time this will be the default profile.

Smoothie Profile

- Button 1: Small Smoothie w/Fresh Fruit
- Button 2: Medium Smoothie 4
- Button 3: Granita / Medium Milkshake
- Button 4: Medium Smoothie 3
- Button 5: Large Smoothie 4
- Button 6: 50 Seconds @ Speed 7

Coffee Profile

- Button 1: Small Margarita / Ice Cappuccino
- Button 2: Large Ice Cappuccino
- Button 3: Small Slushy / Milkshake
- Button 4: Granita / Medium Milkshake
- Button 5: Large Smoothie 2
- Button 6: 50 Seconds @ Speed 7

Milkshake Profile

- Button 1: Small Milkshake
- Button 2: Granita / Medium Milkshake
- Button 3: Milkshake w/Frozen Fruit
- Button 4: Large Milkshake 1
- Button 5: Large Milkshake 2
- Button 6: Large Milkshake 3

4.1.4 Advanced Programming and Diagnostics

Use the programming mode to:

- Select a profile
- Change preprogrammed cycle numbers
- Check blend cycle counts
- Check the diagnostic error log
- Use a custom profile designed via the Blend Wizard™ (Blendtec's online programming tool)

To enter programming mode:

1. Touch and hold cancel/exit button for 3 seconds.
2. Use the scroll arrow and the select icon to scroll and select the desired function.

Note: To return to the main menu from any submenu area, tap the cancel/exit button until the main menu screen appears.

The options available from the main menu are listed below (numbered as displayed in the blender):

1. PROFILES

1. Standard Profiles

1. Smoothie
2. Coffee
3. Multipurpose
4. Milkshake

2. Custom Profiles

2. BLEND CYCLES

1. Standard Blend Cycles

1. Salsa
2. Batter
3. Whole Juice
4. Soup
5. Ice Cream
6. Small Margarita / Ice Cappuccino
7. Large Ice Cappuccino
8. Ice Crush / Milkshake
9. Small Slushy / Milkshake
10. Small Milkshake
11. Granita / Medium Milkshake
12. Milkshake w/Frozen Fruit
13. Large Milkshake 1
14. Large Milkshake 2
15. Large Milkshake 3
16. Small Smoothie w/Fresh Fruit
17. Medium Smoothie 1
18. Medium Smoothie 2
19. Medium Smoothie 3
20. Medium Smoothie 4
21. Large Smoothie 1
22. Large Smoothie 2
23. Large Smoothie 3
24. Large Smoothie 4
25. Large Smoothie 5
26. Large Smoothie 6
27. Ultrathick Smoothie 1
28. Ultrathick Smoothie 2
29. Ultrathick Smoothie 3
30. Ultrathick Smoothie 4
31. 50 Seconds @ Speed 1
32. 50 Seconds @ Speed 2
33. 50 Seconds @ Speed 3
34. 50 Seconds @ Speed 5
35. 50 Seconds @ Speed 7
36. 50 Seconds @ Speed 9
37. Pulse @ Speed 1
38. Pulse @ Speed 2
39. Pulse @ Speed 3
40. Pulse @ Speed 5
41. Pulse @ Speed 7

42. Pulse @ Speed 9

43. Disable Button

2. Custom Blend Cycles

3. CYCLE COUNTS

4. DIAGNOSTIC COUNTS

5. USB FLASH DRIVE

1. Import Profile
2. Export Active Profile
3. Export Counts

6. SETTINGS

1. Screen Standby
2. Blend Cycle Pause
3. Slider Lockout
4. Language. There are three language options:
 1. English
 2. French
 3. Spanish

7. BLENDER INFO

4.1.5 Selecting the Desired Profile

1. Press and hold the cancel/exit button for 3 seconds.
2. Select Profiles from the menu by touching the select button.
3. Use the scroll and select buttons to select either the Standard Profiles or Custom Profiles category.
4. After selecting the Standard or Customer Profile category, you can scroll through the profiles in the category and select the desired profile.
5. "Make this the active profile?" will appear on the screen. Press the select button to confirm or the cancel/exit button to return to the previous menu.

4.1.6 Changing Programmed Cycle Buttons

Temporarily Change Cycle Buttons

To temporarily change cycle buttons when working in a selected profile, complete the following steps:

1. Press and hold the cancel/exit button for 3 seconds.
2. Use the scroll button and then select Blend Cycles from the menu by touching the select button.
3. Use the select button to choose the Standard or Custom Blend cycles.
4. Use the scroll button to find your desired cycle, then press select.
5. Enter the number you want to assign to the cycle, then press select.

Note: After you have customized a cycle to a number button, you will notice that an asterisk appears after the profile name when you return to operation mode. Loading a new profile on your blender will reset the profiles back to default cycle buttons.

Permanently Change Cycle Buttons

To permanently change the cycle buttons in a profile you can export the revised profile to a USB drive and then import the profile on the blender. Or you can edit the profile using the Blend Wizard (my.blendtec.com), and then export the profile to the blender.

Temporarily Disable Cycle Buttons

To temporarily disable a number or cycle button when working in a selected profile, complete the following steps:

1. Press and hold the cancel/exit button for 3 seconds.
2. Use the scroll button and then select Blend Cycles from the menu by touching the select button.
3. Use the select button to choose the Standard Blend Cycles.
4. Use the scroll button to find Disable Button, then press select.
5. Enter the number button you want to disable, then press select.

Note: After you have disabled a number button, you will notice that an asterisk appears after the profile name when you return to operation mode. The disabled button will also not appear on control panel.

Loading a new profile on your blender will reset the profiles and enable all the cycle buttons again.

Permanently Disable Cycle Buttons

To permanently change the cycle buttons in a profile you can export the revised profile to a USB drive, and then import the profile on the blender. Or you can disable any number using the Blend Wizard (my.blendtec.com), and then export the revised profile to the blender.

4.1.7 The Blend Wizard

In addition to using the profiles and cycles preprogrammed on your blender, you can use the Blend Wizard to create custom profiles and cycles. For instructions on using the Blend Wizard to easily develop custom profiles and cycles, visit my.blendtec.com.

Importing Custom Profiles and Cycles

After you've created your custom profiles and cycles using Blend Wizard and downloaded them to a USB flash drive, use the follow steps to import the file to your blender.

1. Use a Phillips screwdriver to remove the USB cover at the top of the right side of the blender.

2. Plug the USB flash drive into the blender's USB port.

Note: If the blender is in manual or automatic operation mode, the USB flash drive menu will automatically load on the screen. If the blender is in programming mode, go to the main menu and select USB Flash Drive.

3. Select Import Profile from the USB flash drive menu.
4. Scroll through the items on the flash drive and locate the desired custom profile file (by default named stealth.bpf).

Note: Items with a + sign next to them are folders; if the custom profile file is in a folder, press the select button to open the folder.

5. Select the desired file. You will then be asked whether you want to import the selected file.
6. Press the select button again to start the import process. After the file has been imported, the profile in the file will be automatically loaded as the active profile on the blender.
7. Remove the USB drive from the blender, and secure the cover on the USB port with a Phillips screwdriver.

Secure Blender Feature

When creating or modifying a profile via the Blend Wizard, one of the options is to secure the blender. If you select this option, once you have downloaded the profile to a USB drive and then imported the profile to the blender, some of the advanced programming functions will be disabled.

The secured profile will be the active profile on the blender, another profile cannot be made the active profile and a new profile cannot be imported to the blender (unless it was created via your Blend Wizard account). Additionally, the blend cycles in the profile cannot be changed on the blender, and the Enclosure Safety Mode, Screen Standby Time, Blend Cycle Pause and Slider Lockout settings cannot be modified.

To unlock these features, complete the following steps:

1. Log on to your Blend Wizard account at my.blendtec.com.
2. Edit the secured profile, selecting the option to turn off the secure blender mode, or create a new profile with the secure blender mode turned off.
3. Import the profile to a USB drive, and then follow the instructions to import the file to the blender.

Exporting and Transferring Profiles

To export profiles and transfer them to the Blend Wizard, complete the following steps:

1. Ensure the profile you want to export is the active profile on the blender.
2. Use a Phillips screwdriver to remove the USB cover at the top of the right side of the blender.
3. Plug the USB flash drive into the blender's USB port.

Note: If the blender is in manual or automatic operation mode, the USB flash drive menu will automatically load on the screen. If the blender is in programming mode, go to the main menu and select USB Flash Drive.

4. Use the scroll button to find Export Active Profile and press the select button.
Note: If the USB flash drive the file is being exported to does not already contain the sth-prof.bpf file, the LED screen will display the question, "Export profile to the sth-prof.bpf file?" Press the select button to start the export process. Press the cancel/exit button to return to the previous menu.
If the USB flash drive the file is being exported to already contains the sth-prof.bpf file, the LED screen will display the question, "Export profile and overwrite the sth-prof.bpf file?" If you want to overwrite the file on the USB flash drive, press the select button to start the export process. If you do not want to overwrite the file on the USB flash drive, press the cancel/exit button to cancel the export.
5. After the export is complete, remove the USB flash drive and secure the cover on the USB port with a Phillips screwdriver.
6. Insert the USB flash drive into a computer, and log in to the Blend Wizard (my.blendtec.com). Follow the instructions on the site to transfer the profile to your account.

4.1.8 Blender Settings

You can change various blender settings for optimal blending performance and function based on your needs.

Screen Standby Time

You can adjust the length of time before the blender switches to standby mode (15 minutes, 1 hour, 6 hours or 12 hours).

To select a new standby time, complete the following steps:

1. Press and hold the cancel/exit button for 3 seconds.
2. Use the scroll button and then select Settings from the menu by touching the select button.
3. Use the scroll button and then select Screen Standby from the menu by touching the select button.
4. Use the scroll button to find your desired standby time, then press select.
5. Press the cancel/exit button to return to the previous menu.

Blend Cycle Pause

When in automatic mode, this setting allows you to pause and resume a blend cycle at the same time and speed.

To enable or disable the Blend Cycle Pause feature, complete the following steps:

1. Press and hold the cancel/exit button for 3 seconds.
2. Use the scroll button and then select Settings from the menu by touching the select button.
3. Use the scroll button and then select Blend Cycle Pause from the menu by touching the select button.
4. Use the select button to toggle between disabling and enabling the blend cycle pause.

Note: When the Blend Cycle Pause setting is enabled, a cycle can be

- paused by pressing any button. If the Blend Cycle Pause function is disabled, pressing any button disabled will simply stop a blend cycle.*
5. Press the cancel/exit button to return to the previous menu.

Language

The menus on the Stealth's display are available in three languages: English, French, and Spanish.

To select a language, complete the following steps:

1. Press and hold the cancel/exit button for 3 seconds.
2. Use the scroll button and then select Settings from the menu by touching the select button.
3. Use the scroll button and then select Language from the menu by touching the select button.
4. Use the scroll button to find your desired language, then press select.
5. Press the cancel/exit button to return to the previous menu.

4.1.9 Blender Statistics

Blend Cycle Counts

You can review the total number of cycles run, the number of cycles run for each control surface number, the number of times the pulse button has been used. Also, for Stealth 875 only, you can review the number of times the slider control bar has been used.

1. Press and hold the cancel/exit button for 3 seconds.
2. Use the scroll button and then select Cycle Counts from the menu by touching the select button.
3. Use the scroll button to see the number of cycles run in each category.
4. Press the cancel/exit button to return to the previous menu.

Note: The pulse count refers to pulse sets. For example, touching the pulse button 5 times in a row will register as 1 pulse count. Touching the pulse button, then a cycle number and then the pulse button will register as 2 pulse counts.

Diagnostic Error Log

You can review the diagnostic errors that have been logged on the blender.

1. Press and hold the cancel/exit button for 3 seconds.
2. Use the scroll button and then select Diagnostic Counts from the menu by touching the select button.
3. Use the scroll button to see the how many errors have occurred in each category.
4. Press the cancel/exit button to return to the previous menu.

Exporting Blender Statistics

Exporting blender statistics (cycle counts, errors, settings and firmware versions)

is a way to save diagnostic information, which Blendtec's customer service and repair experts will use if problems arise with your blender.

To export blender statistics to a USB drive, complete the following steps:

1. Use a Phillips screwdriver to remove the USB cover at the top of the right side of the blender.
2. Plug the USB flash drive into the blender's USB port.

Note: If the blender is in manual or automatic operation mode, the USB flash drive menu will automatically load on the screen. If the blender is in programming mode, go to the main menu and select USB Flash Drive.

3. Use the scroll button to find Export Counts, then press the select button. You will be asked if you want to export counts to the sth-cnts.csv file.
4. Press the select button again to start the export process.
5. After the export process is finished, remove the USB drive from the blender and secure the cover on the USB port with a Phillips screwdriver.

4.2 STEALTH 875™ & STEALTH 885™

4.2.1 Installation

Stealth Above Counter Installation

- Select a location that is near an electrical outlet. Also consider proximity to ingredients, and patrons as well as available counter space.
- Place the blender on the counter in a spot where the air intake vents on the sides and exhaust on the back of the blender are unobstructed.
- Ensure there is enough room above and around the unit to allow for unhampered movement of the sound enclosure (see Figure 1 for measurements).
- Plug the unit into an outlet with appropriate electrical protection.

Stealth In-Counter - Preparation for Installation

Note: You may locate your Blendtec Stealth in the same space as your previous Blendtec in-counter blender. Just remember to ensure proper spacing for the sound enclosure (see Figure 1 for measurements).

- Identify the desired blender location. Consider proximity to ingredients, and patrons as well as available counter space. Also ensure that an electrical outlet is readily accessible.
- Ensure the location meets all dimensional requirements (see Figures 1 and 3).
- The countertop can be no thicker than $\frac{3}{4}$ " (1.9 cm). A thicker countertop will obstruct motor ventilation.
- If installing more than one blender, allow 14"–16" (35.6 - 40.6 cm) of center-to-center blender spacing.
- If installing a sound enclosure, allow a clearance of at least 5 $\frac{1}{2}$ " (14 cm) from the sound enclosure to the wall and 26" (66 cm) from the countertop to any over-the-counter cabinetry.
- Ensure lower cabinetry allows adequate airflow.
 - The blender draws ambient air into the vent holes located on the lower back of the motor and then evacuates hot air through the vents located on the lower front and sides of the motor. For the motor to cool properly, a sufficient amount of air must be able to circulate around the motor.
 - There should be at least 6 $\frac{1}{2}$ " (16.5 cm) of space from the countertop to the next lower shelf of the cabinet, leaving a minimum space of 3" (7.6 cm) between the bottom of the motor and the lower shelf. Cabinetry should not be closed; it should allow air to flow freely from the outside to the inside of the cabinet space.
 - Plastic bags, cups, and so forth, should not be stored closer than 3" (7.6 cm) from the bottom of the motor.
- Cut a hole in the countertop 4 $\frac{3}{8}$ " (11.1 cm) wide and 5 $\frac{7}{8}$ " (14.9 cm) long (see the countertop hole template in Appendix A). Ensure that the 4 $\frac{3}{8}$ " (11.1 cm) sides are parallel with the machine operator.

Note: Double check to ensure that all space requirements and measurements are correct BEFORE cutting.

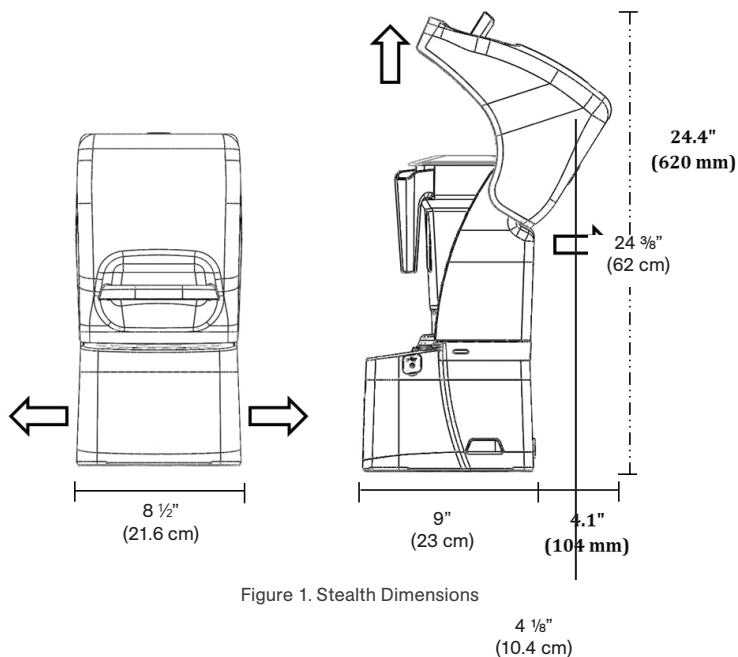


Figure 2. Stealth Components

In-Counter Installation

- Feed the electrical cord through the hole in the countertop.
- Gently place the blender unit into the hole.
- Ensure the gasket is seated correctly, lying flat against the counter surface and not pinched by the housing.
- Plug the unit into an outlet with appropriate electrical protection.

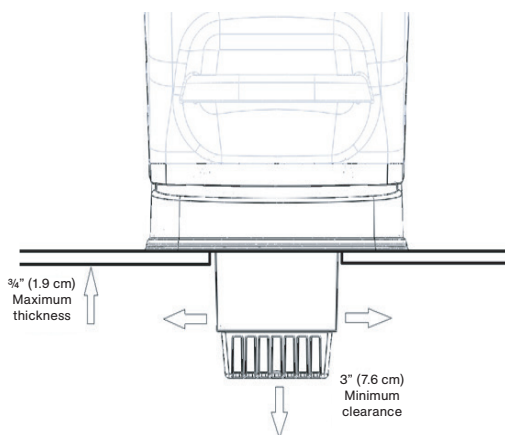
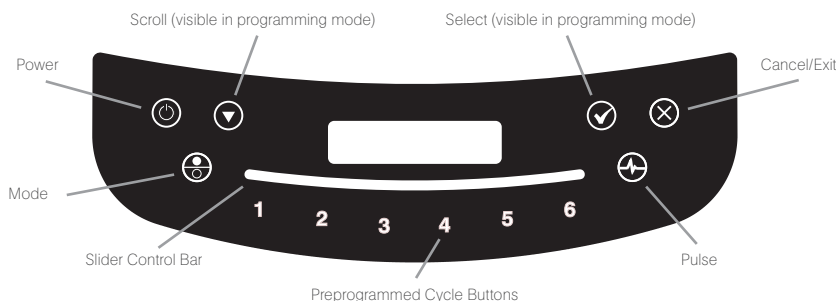


Figure 3. Stealth In-Counter Clearance

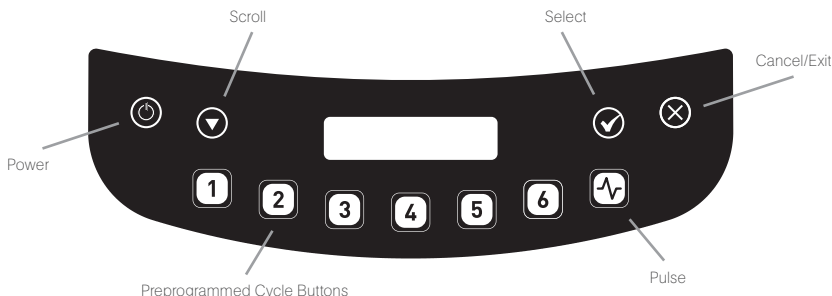
4.2.2 Stealth 875™ Quick Start Guide

1. Touch the power icon to turn on the blender.
2. Raise the sound enclosure lid.
3. Place the blender jar on the motor base, ensuring the jar is completely seated and the jar lid is secured.
4. Close the sound enclosure lid.
5. On the control surface, touch the desired blend cycle number, pulse icon or desired location on the slider control bar.
6. To stop a blend cycle before the programmed time elapses, press the cancel/exit button. If you have enabled the Blend Cycle Pause feature, press the previously selected blend cycle button to pause the cycle. To resume the paused cycle, press the previously selected blend cycle button again.



4.2.3 Stealth 885™ Quick Start Guide

1. Press the power icon to turn on the blender.
2. Raise the sound enclosure lid.
3. Place the blender jar on the motor base, ensuring the jar is completely seated and the jar lid is secured.
4. Close the sound enclosure lid.
5. On the control surface, press the desired blend cycle number or pulse icon.
6. To stop a blend cycle before the programmed time elapses, press the cancel/exit button. If you have enabled the Blend Cycle Pause feature, press the previously selected blend cycle button to pause the cycle. To resume the paused cycle, press the previously selected blend cycle button again.



4.2.4 Automatic Cycle Operation

Your Stealth blender is preprogrammed with multiple blender profiles to help operators achieve consistent blends with a minimum of training, trial, and error. You can select from the following profiles and blend cycles:

Multipurpose Profile*

- Button 1: Small Milkshake
- Button 2: Granita / Medium Milkshake
- Button 3: Small Margarita / Ice Cappuccino
- Button 4: Medium Smoothie 4
- Button 5: Large Smoothie 4
- Button 6: 50 Seconds @ Speed 7

*When you turn the blender on for the first time this will be the default profile.

Smoothie Profile

- Button 1: Small Smoothie w/Fresh Fruit
- Button 2: Medium Smoothie 4
- Button 3: Granita / Medium Milkshake
- Button 4: Medium Smoothie 3
- Button 5: Large Smoothie 4
- Button 6: 50 Seconds @ Speed 7

Coffee Profile

- Button 1: Small Margarita / Ice Cappuccino
- Button 2: Large Ice Cappuccino
- Button 3: Small Slushy / Milkshake
- Button 4: Granita / Medium Milkshake

Button 5: Large Smoothie 2
Button 6: 50 Seconds @ Speed 7

Milkshake Profile

Button 1: Small Milkshake
Button 2: Granita / Medium Milkshake
Button 3: Milkshake w/Frozen Fruit
Button 4: Large Milkshake 1
Button 5: Large Milkshake 2
Button 6: Large Milkshake 3

4.2.5 11-Speed Capacitive Touch Slider + Pulse

Touch the mode button to switch from automatic to manual operation mode and the 11-speed capacitive touch slider. The capacitive touch slider provides seamless precision speed control; simply slide your finger to adjust your blender's speed. The blender will run for 90-second intervals in this mode. Select the Pulse function to add a burst of speed and power.

NOTE: The 11-Speed Capacitive Touch Slider is not available on the Stealth 885 model

4.2.6 Advanced Programming and Diagnostics

Use the programming mode to:

- Select a profile
- Change preprogrammed cycle numbers
- Check blend cycle counts
- Check the diagnostic error log
- Use a custom profile designed via the Blend Wizard™ (Blendtec's online programming tool)

To enter programming mode:

1. Touch and hold cancel/exit button for 3 seconds.
2. Use the scroll arrow and the select icon to scroll and select the desired function.

Note: To return to the main menu from any submenu area, tap the cancel/exit button until the main menu screen appears.

The options available from the main menu are listed below (numbered as displayed in the blender):

1. PROFILES

1. Standard Profiles

1. Smoothie
2. Coffee
3. Multipurpose
4. Milkshake

2. Custom Profiles

2. BLEND CYCLES

1. Standard Blend Cycles

1. Salsa

2. Batter
3. Whole Juice
4. Soup
5. Ice Cream
6. Small Margarita / Ice Cappuccino
7. Large Ice Cappuccino
8. Ice Crush / Milkshake
9. Small Slushy / Milkshake
10. Small Milkshake
11. Granita / Medium Milkshake
12. Milkshake w/Frozen Fruit
13. Large Milkshake 1
14. Large Milkshake 2
15. Large Milkshake 3
16. Small Smoothie w/Fresh Fruit
17. Medium Smoothie 1
18. Medium Smoothie 2
19. Medium Smoothie 3
20. Medium Smoothie 4
21. Large Smoothie 1
22. Large Smoothie 2
23. Large Smoothie 3
24. Large Smoothie 4
25. Large Smoothie 5
26. Large Smoothie 6
27. Ultrathick Smoothie 1
28. Ultrathick Smoothie 2
29. Ultrathick Smoothie 3
30. Ultrathick Smoothie 4
31. 50 Seconds @ Speed 1
32. 50 Seconds @ Speed 2
33. 50 Seconds @ Speed 3
34. 50 Seconds @ Speed 5
35. 50 Seconds @ Speed 7
36. 50 Seconds @ Speed 9
37. Pulse @ Speed 1
38. Pulse @ Speed 2
39. Pulse @ Speed 3
40. Pulse @ Speed 5
41. Pulse @ Speed 7
42. Pulse @ Speed 9
43. Disable Button

2. Custom Blend Cycles

3. CYCLE COUNTS

4. DIAGNOSTIC COUNTS

5. USB FLASH DRIVE

1. Import Profile
2. Export Active Profile
3. Export Counts

6. SETTINGS

1. Enclosure Safety Mode
2. Screen Standby
3. Blend Cycle Pause
4. Slider Lockout
5. Language. There are three language options:
 1. English
 2. French
 3. Spanish

7. BLENDER INFO

4.2.7 Selecting the Desired Profile

1. Press and hold the cancel/exit button for 3 seconds.
2. Select Profiles from the menu by touching the select button.
3. Use the scroll and select buttons to select either the Standard Profiles or Custom Profiles category.
4. After selecting the Standard or Customer Profile category, you can scroll through the profiles in the category and select the desired profile.
5. "Make this the active profile?" will appear on the screen. Press the select button to confirm or the cancel/exit button to return to the previous menu.

4.2.8 Changing Programmed Cycle Buttons

Temporarily Change Cycle Buttons

To temporarily change cycle buttons when working in a selected profile, complete the following steps:

1. Press and hold the cancel/exit button for 3 seconds.
2. Use the scroll button and then select Blend Cycles from the menu by touching the select button.
3. Use the select button to choose the Standard or Custom Blend cycles.
4. Use the scroll button to find your desired cycle, then press select.
5. Enter the number you want to assign to the cycle, then press select.

Note: After you have customized a cycle to a number button, you will notice that an asterisk appears after the profile name when you return to operation mode. Loading a new profile on your blender will reset the profiles back to default cycle buttons.

Permanently Change Cycle Buttons

To permanently change the cycle buttons in a profile you can export the revised profile to a USB drive and then import the profile on the blender. Or you can edit the profile using the Blend Wizard (my.blendtec.com), and then export the profile to the blender.

Temporarily Disable Cycle Buttons

To temporarily disable a number or cycle button when working in a selected profile, complete the following steps:

1. Press and hold the cancel/exit button for 3 seconds.
2. Use the scroll button and then select Blend Cycles from the menu by touching the select button.
3. Use the select button to choose the Standard Blend Cycles.
4. Use the scroll button to find Disable Button, then press select.
5. Enter the number button you want to disable, then press select.

Note: After you have disabled a number button, you will notice that an asterisk appears after the profile name when you return to operation mode. The disabled button will also not appear on control panel.

Loading a new profile on your blender will reset the profiles and enable all the cycle buttons again.

Permanently Disable Cycle Buttons

To permanently change the cycle buttons in a profile you can export the revised profile to a USB drive, and then import the profile on the blender. Or you can disable any number using the Blend Wizard (my.blendtec.com), and then export the revised profile to the blender.

4.2.9 The Blend Wizard

In addition to using the profiles and cycles preprogrammed on your blender, you can use the Blend Wizard to create custom profiles and cycles. For instructions on using the Blend Wizard to easily develop custom profiles and cycles, visit my.blendtec.com.

Importing Custom Profiles and Cycles

After you've created your custom profiles and cycles using Blend Wizard and downloaded them to a USB flash drive, use the follow steps to import the file to your blender.

1. Use a Phillips screwdriver to remove the USB cover at the top of the right side of the blender.
2. Plug the USB flash drive into the blender's USB port.

Note: If the blender is in manual or automatic operation mode, the USB flash drive menu will automatically load on the screen. If the blender is in programming mode, go to the main menu and select USB Flash Drive.

3. Select Import Profile from the USB flash drive menu.

4. Scroll through the items on the flash drive and locate the desired custom profile file (by default named `stealth.bpf`).

Note: Items with a + sign next to them are folders; if the custom profile file is in a folder, press the select button to open the folder.

5. Select the desired file. You will then be asked whether you want to import the selected file.
6. Press the select button again to start the import process. After the file has been imported, the profile in the file will be automatically loaded as the active profile on the blender.
7. Remove the USB drive from the blender, and secure the cover on the USB port with a Phillips screwdriver.

Secure Blender Feature

When creating or modifying a profile via the Blend Wizard, one of the options is to secure the blender. If you select this option, once you have downloaded the profile to a USB drive and then imported the profile to the blender, some of the advanced programming functions will be disabled.

The secured profile will be the active profile on the blender, another profile cannot be made the active profile and a new profile cannot be imported to the blender (unless it was created via your Blend Wizard account). Additionally, the blend cycles in the profile cannot be changed on the blender, and the Enclosure Safety Mode, Screen Standby Time, Blend Cycle Pause and Slider Lockout settings cannot be modified.

To unlock these features, complete the following steps:

1. Log on to your Blend Wizard account at my.blendtec.com.
2. Edit the secured profile, selecting the option to turn off the secure blender mode, or create a new profile with the secure blender mode turned off.
3. Import the profile to a USB drive, and then follow the instructions to import the file to the blender.

Exporting and Transferring Profiles

To export profiles and transfer them to the Blend Wizard, complete the following steps:

1. Ensure the profile you want to export is the active profile on the blender.
2. Use a Phillips screwdriver to remove the USB cover at the top of the right side of the blender.
3. Plug the USB flash drive into the blender's USB port.

Note: If the blender is in manual or automatic operation mode, the USB flash drive menu will automatically load on the screen. If the blender is in programming mode, go to the main menu and select USB Flash Drive.

4. Use the scroll button to find Export Active Profile and press the select button.

Note: If the USB flash drive the file is being exported to does not already contain the `sth-prof.bpf` file, the LED screen will display the question, "Export profile to the `sth-prof.bpf` file?" Press the select button to start the export process. Press the cancel/exit button to return to the previous menu.

If the USB flash drive the file is being exported to already contains the sth-prof.bpf file, the LED screen will display the question, "Export profile and overwrite the sth-prof.bpf file?" If you want to overwrite the file on the USB flash drive, press the select button to start the export process. If you do not want to overwrite the file on the USB flash drive, press the cancel/exit button to cancel the export.

5. After the export is complete, remove the USB flash drive and secure the cover on the USB port with a Phillips screwdriver.
6. Insert the USB flash drive into a computer, and log in to the Blend Wizard (my.blendtec.com). Follow the instructions on the site to transfer the profile to your account.

4.2.10 Blender Settings

You can change various blender settings for optimal blending performance and function based on your needs.

Enclosure Safety Mode

The enclosure safety feature prompts you to ensure the sound enclosure lid is closed during motor operation. It will also turn off the motor if you raise the sound enclosure during blending.

To enable or disable the enclosure safety feature, complete the following steps:

1. Press and hold the cancel/exit button for 3 seconds.
2. Use the scroll button and then select Settings from the menu by touching the select button.
3. Use the select button to choose the Enclosure Safety Mode.
4. Use the select button to toggle between disabling and enabling the enclosure safety feature.
5. Press the cancel/exit button to return to the previous menu.

Screen Standby Time

You can adjust the length of time before the blender switches to standby mode (15 minutes, 1 hour, 6 hours or 12 hours).

To select a new standby time, complete the following steps:

1. Press and hold the cancel/exit button for 3 seconds.
2. Use the scroll button and then select Settings from the menu by touching the select button.
3. Use the scroll button and then select Screen Standby from the menu by touching the select button.
4. Use the scroll button to find your desired standby time, then press select.
5. Press the cancel/exit button to return to the previous menu.

Blend Cycle Pause

When in automatic mode, this setting allows you to pause and resume a blend cycle at the same time and speed.

To enable or disable the Blend Cycle Pause feature, complete the following steps:

1. Press and hold the cancel/exit button for 3 seconds.
2. Use the scroll button and then select Settings from the menu by touching the select button.
3. Use the scroll button and then select Blend Cycle Pause from the menu by touching the select button.
4. Use the select button to toggle between disabling and enabling the blend cycle pause.

Note: When the Blend Cycle Pause setting is enabled, a cycle can be paused by pressing any button. If the Blend Cycle Pause function is disabled, pressing any button disabled will simply stop a blend cycle.

5. Press the cancel/exit button to return to the previous menu.

Slider Lockout (Stealth 875 only)

The Slider Lockout feature allows you to disable the slider bar on the control surface. When this feature is enabled, only profiles on the blender can be used to operate the blender.

To enable or disable this feature, complete the following steps:

1. Press and hold the cancel/exit button for 3 seconds.
2. Use the scroll button and then select Settings from the menu by touching the select button.
3. Use the scroll button and then select Slider Lockout from the menu by touching the select button.
4. Use the select button to toggle between disabling and enabling the slider lockout.
5. Press the cancel/exit button to return to the previous menu.

Language

The menus on the Stealth's display are available in three languages: English, French, and Spanish.

To select a language, complete the following steps:

1. Press and hold the cancel/exit button for 3 seconds.
2. Use the scroll button and then select Settings from the menu by touching the select button.
3. Use the scroll button and then select Language from the menu by touching the select button.
4. Use the scroll button to find your desired language, then press select.
5. Press the cancel/exit button to return to the previous menu.

4.2.11 Blender Statistics

Blend Cycle Counts

You can review the total number of cycles run, the number of cycles run for each control surface number, the number of times the pulse button has been used.

Also, for Stealth 875 only, you can review the number of times the slider control bar has been used.

1. Press and hold the cancel/exit button for 3 seconds.
2. Use the scroll button and then select Cycle Counts from the menu by touching the select button.
3. Use the scroll button to see the number of cycles run in each category.
4. Press the cancel/exit button to return to the previous menu.

Note: The pulse count refers to pulse sets. For example, touching the pulse button 5 times in a row will register as 1 pulse count. Touching the pulse button, then a cycle number and then the pulse button will register as 2 pulse counts.

Diagnostic Error Log

You can review the diagnostic errors that have been logged on the blender.

1. Press and hold the cancel/exit button for 3 seconds.
2. Use the scroll button and then select Diagnostic Counts from the menu by touching the select button.
3. Use the scroll button to see the how many errors have occurred in each category.
4. Press the cancel/exit button to return to the previous menu.

Exporting Blender Statistics

Exporting blender statistics (cycle counts, errors, settings and firmware versions) is a way to save diagnostic information, which Blendtec's customer service and repair experts will use if problems arise with your blender.

To export blender statistics to a USB drive, complete the following steps:

1. Use a Phillips screwdriver to remove the USB cover at the top of the right side of the blender.
2. Plug the USB flash drive into the blender's USB port.

Note: If the blender is in manual or automatic operation mode, the USB flash drive menu will automatically load on the screen. If the blender is in programming mode, go to the main menu and select USB Flash Drive.

3. Use the scroll button to find Export Counts, then press the select button. You will be asked if you want to export counts to the sth-cnts.csv file.
4. Press the select button again to start the export process.
5. After the export process is finished, remove the USB drive from the blender and secure the cover on the USB port with a Phillips screwdriver.

4.3 CONNOISSEUR 825™

4.3.1 Installation

Connoisseur 825 Above Counter Installation

- Select a location that is near an electrical outlet. Also, consider proximity to ingredients, and patrons as well as available counter space.
- Place the blender on the counter in a spot where the air intake vents on the sides and exhaust on the back of the blender are unobstructed.
- Ensure there is enough room above and around the unit to allow for unhampered movement of the sound enclosure (see Figure 4 for measurements).
- Plug the unit into an outlet with appropriate electrical protection.

Connoisseur 825 In-Counter - Preparation for Installation

Note: You may locate your Blendtec Connoisseur 825 in the same space as your previous Blendtec in-counter blender. Just remember to ensure proper spacing for the sound enclosure (see Figure 4 for measurements).

- Identify the desired blender location. Consider proximity to ingredients, and patrons as well as available counter space. Also, ensure that an electrical outlet is readily accessible.
- Ensure the location meets all dimensional requirements (see Figures 4 and 5).
- The countertop can be no thicker than 0.75" (1.9 cm). A thicker countertop will obstruct motor ventilation.
- If installing more than one blender, allow 14" - 16" (35.6 - 40.6 cm) of center-to-center blender spacing.
- If installing a sound enclosure, allow a clearance of at least 5" (14 cm) from the sound enclosure to the wall and 26" (66 cm) from the countertop to any over-the-counter cabinetry.
- Ensure lower cabinetry allows adequate airflow.
- The blender draws ambient air into the vent holes located on the upper sides of the motor and then evacuates hot air through the vents on the bottom of the motor. For the motor to cool properly, a sufficient amount of air must be able to circulate around the motor.
- There should be at least 6" (16.5 cm) of space from the countertop to the next lower shelf of the cabinet, leaving a minimum space of 3" (7.6 cm) between the bottom of the motor and the lower shelf. Cabinetry should not be closed; it should allow air to flow freely from the outside to the inside of the cabinet space.
- Plastic bags, cups, and so forth, should not be stored closer than 3" (7.6 cm) from the bottom of the motor.
- Cut a hole in the countertop 4 3/8" (11.1 cm) wide and 5 7/8" (14.9 cm) long (see the countertop hole template in Appendix A). Ensure that the 4 3/8" (11.1 cm) sides are parallel with the machine operator.

Note: Double check to ensure that all space requirements and measurements are correct BEFORE cutting.

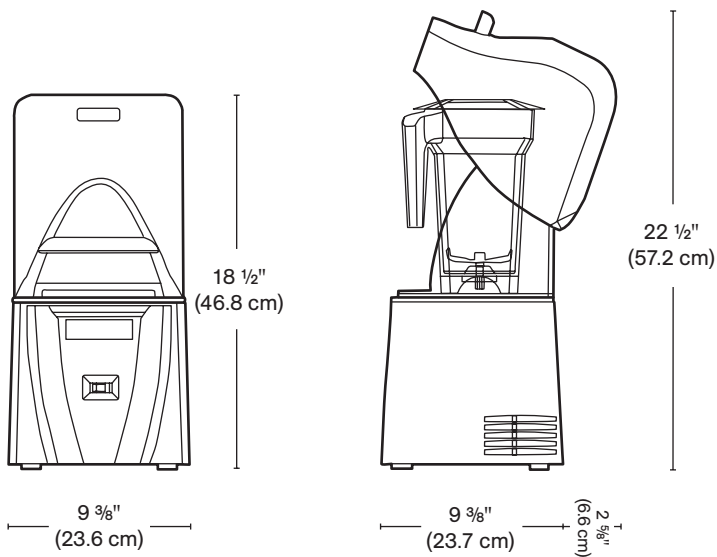
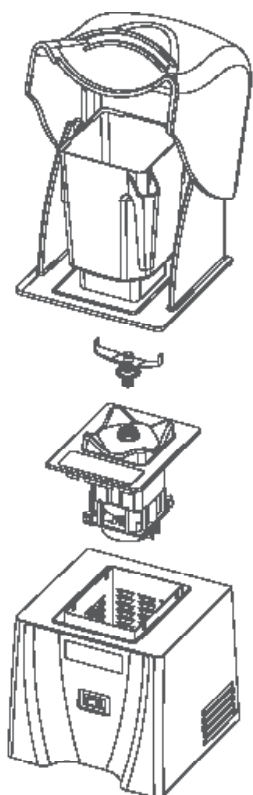


Figure 4. Connoisseur 825 Dimensions



CONNOISSEUR 825™

SOUND ENCLOSURE

EASY-CLEAN JAR

BLADE ASSEMBLY

HARDENED METAL
DRIVE SOCKET & MOTOR

MOTOR BASE

In-Counter Installation

- Feed the electrical cord through the hole in the countertop.
- Gently place the blender unit into the hole.
- Ensure the gasket is seated correctly, lying flat against the counter surface and not pinched by the housing.
- Plug the unit into an outlet with appropriate electrical protection.

Quick Start Guide

1. Turn on the blender by toggling the power switch on the front of the blender.
2. Raise the sound enclosure lid.
3. Place the blender jar on the motor base, ensuring the jar is completely seated and the jar lid is secured.
4. Close the sound enclosure lid.
5. On the touchpad, press the desired blend cycle number or pulse icon.
6. Push any blend cycle button (1 through 5) to stop a blend cycle before the programmed time elapses.

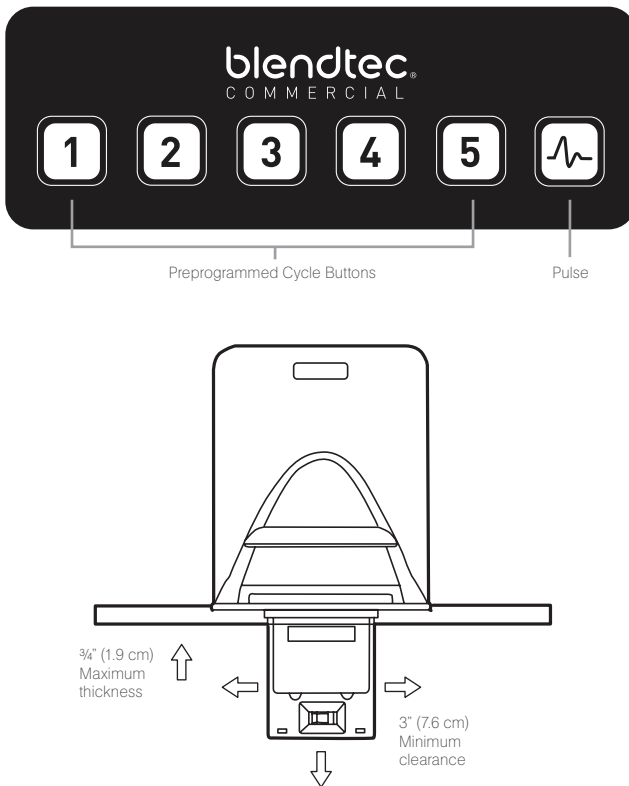


Figure 5. Counter space for Connoisseur 825

Automatic Cycle Operation

Your Connoisseur blender is preprogrammed with multiple blender profiles to help operators achieve consistent blends with a minimum of training, trial, and error.

You can select from the following profiles and blend cycles:

Multipurpose Profile*

Button 1: Small Milkshake

Button 2: Granita / Medium Milkshake

Button 3: Small Margarita / Ice Cappuccino

Button 4: Medium Smoothie 4

Button 5: Large Smoothie 4

Button 6: Pulse @ Speed 7

**When you turn the blender on for the first time this will be the default profile.*

Smoothie Profile

Button 1: Small Smoothie w/Fresh Fruit

Button 2: Medium Smoothie 4

Button 3: Granita / Medium Milkshake

Button 4: Medium Smoothie 3

Button 5: Large Smoothie 4

Button 6: Pulse @ Speed 7

Coffee Profile

Button 1: Small Margarita / Ice Cappuccino

Button 2: Large Ice Cappuccino

Button 3: Small Slushy / Milkshake

Button 4: Granita / Medium Milkshake

Button 5: Large Smoothie 2

Button 6: Pulse @ Speed 7

Milkshake Profile

Button 1: Small Milkshake

Button 2: Granita / Medium Milkshake

Button 3: Milkshake w/Frozen Fruit

Button 4: Large Milkshake 1

Button 5: Large Milkshake 2

Button 6: Pulse @ Speed 7

Advanced Programming and Diagnostics

Use the programming mode to:

- Select a profile
- Change preprogrammed cycle numbers
- Check blend cycle counts
- Check the diagnostic error log
- Use a custom profile designed via the Blend Wizard™ (Blendtec's online programming tool)

To enter programming mode:

- 1.Touch and hold buttons 2 and 4 for 1 second.
- 2.Use button 1 to scroll and button 5 to select the desired function.

Note: To return to the main menu from any submenu area, tap the pulse button until the main menu screen appears.

The options available from the main menu are listed below (numbered as displayed in the blender):

1. PROFILES

1. Standard Profiles

1. Smoothie
2. Coffee
3. Multipurpose
4. Milkshake

2. Custom Profiles

2. BLEND CYCLES

1. Standard Blend Cycles

1. Salsa
2. Batter
3. Whole Juice
4. Soup
5. Ice Cream
6. Small Margarita / Ice Cappuccino
7. Large Ice Cappuccino
8. Ice Crush / Milkshake
9. Small Slushy / Milkshake
10. Small Milkshake
11. Granita / Medium Milkshake
12. Milkshake w/Frozen Fruit

13. Large Milkshake 1
14. Large Milkshake 2
15. Large Milkshake 3
16. Small Smoothie w/Fresh Fruit
17. Medium Smoothie 1
18. Medium Smoothie 2
19. Medium Smoothie 3
20. Medium Smoothie 4
21. Large Smoothie 1
22. Large Smoothie 2
23. Large Smoothie 3
24. Large Smoothie 4
25. Large Smoothie 5
26. Large Smoothie 6
27. Ultrathick Smoothie 1
28. Ultrathick Smoothie 2
29. Ultrathick Smoothie 3
30. Ultrathick Smoothie 4
31. 50 Seconds @ Speed 1
32. 50 Seconds @ Speed 2
33. 50 Seconds @ Speed 3
34. 50 Seconds @ Speed 5
35. 50 Seconds @ Speed 7
36. 50 Seconds @ Speed 9
37. Pulse @ Speed 1
38. Pulse @ Speed 2
39. Pulse @ Speed 3
40. Pulse @ Speed 5
41. Pulse @ Speed 7
42. Pulse @ Speed 9
43. Disable Button

2. Custom Blend Cycles

3. CYCLE COUNTS

4. DIAGNOSTIC COUNTS

5. USB FLASH DRIVE

1. Import Profile
2. Export Active Profile
3. Export Counts

6. BLENDER INFO

Selecting the Desired Profile

- 1. Press and hold buttons 2 and 4 for 1 second to enter the menu.
- 2. Press button 1 to scroll to the Profiles menu and press button 5 to select.
- 3. Use buttons 1 and 5 to scroll and select either the Standard Profiles or Custom Profiles category.
- 4. After selecting the Standard or Custom Profile category, you can scroll through the profiles in the category using button 1 and select the desired profile using button 5.
- 5. "Make this the active profile?" will appear on the screen. Press button 5 to confirm or pulse button to cancel and return to the previous menu

4.3.2 Changing Programmed Cycle Buttons

Temporarily Change Cycle Buttons

- To temporarily change cycle buttons when working in a selected profile, complete the following steps:
- 1. Press and hold buttons 2 and 4 for 1 second to enter the menu.
- 2. Press button 1 to scroll to the Blend Cycles menu and press button 5 to select.
- 3. Use buttons 1 and 5 to scroll and select either the Standard or Custom Blend Cycles category.
- 4. Use button 1 to scroll and find your desired cycle, then press button 5 to select.
- 5. Press the button you want to assign to the cycle, then press button 5 to confirm or pulse button to cancel and return to the previous menu.
- Note: After you have customized a cycle to a button, you will notice that an asterisk appears after the profile name when you return to operation
- mode. Loading a new profile on your blender will reset the profiles back to default cycle buttons.

Permanently Change Cycle Buttons

To permanently change the cycle buttons in a profile you can export the revised profile to a USB drive and then import the profile on the blender. Or you can edit the profile using the Blend Wizard (my.blendtec.com), and then export the profile to the blender.

Temporarily Disable Cycle Buttons

To temporarily disable a number or cycle button when working in a selected profile, complete the following steps:

1. Press and hold buttons 2 and 4 for 1 second to enter the menu.
2. Press button 1 to scroll to the Blend Cycles menu and press button 5 to select.
3. Press button 5 to select the Standard Blend Cycles.
4. Use button 1 to scroll and find Disable Button, then press button 5 to select.
5. Press the button you want to disable, then press button 5 to select or pulse button to cancel and return to the previous menu.

Note: After you have disabled a button, you will notice that an asterisk appears after the profile name when you return to operation mode. The disabled button will also not appear on control panel.

Loading a new profile on your blender will reset the profiles and enable all the cycle buttons again.

Permanently Disable Cycle Buttons

To permanently change the cycle buttons in a profile you can export the revised profile to a USB drive, and then import the profile on the blender. Or you can disable any number using the Blend Wizard (my.blendtec.com), and then export the revised profile to the blender.

4.3.3 The Blend Wizard

In addition to using the profiles and cycles preprogrammed on your blender, you can use the Blend Wizard to create custom profiles and cycles. For instructions on using the Blend Wizard to easily develop custom profiles and cycles, visit my.blendtec.com.

Importing Custom Profiles and Cycles

After you've created your custom profiles and cycles using Blend Wizard and downloaded them to a USB flash drive, use the follow steps to import the file to your blender.

1. Locate the USB port on the bottom of the blender.
2. Plug the USB flash drive into the blender's USB port.

Note: If the blender is in manual or automatic operation mode, the USB flash drive menu will automatically load on the screen. If the blender is in programming mode, go to the main menu and select USB Flash Drive.

3. Use button 1 to scroll through the menu and button 5 to select Import Profile.
4. Use button 1 to scroll through the items on the flash drive and locate the desired custom profile file (by default named ICBU.BPF).

Note: Items with a + sign next to them are folders; if the custom profile file is in a folder, press button 5 to open the folder.

5.Press button 5 to select the desired file. You will then be asked to confirm if you want to import the selected file.

6.Press button 5 again to start the import process. After the file has been imported, the profile in the file will be automatically loaded as the active profile on the blender.

7.Remove the USB drive from the blender.

Secure Blender Feature

When creating or modifying a profile via the Blend Wizard, one of the options is to secure the blender. If you select this option, once you have downloaded the profile to a USB drive and then imported the profile to the blender, some of the advanced programming functions will be disabled.

The secured profile will be the active profile on the blender, another profile cannot be made the active profile and a new profile cannot be imported to the blender (unless it was created via your Blend Wizard account). Additionally, the blend cycles in the profile cannot be changed on the blender.

To unlock these features, complete the following steps:

- 1.Log on to your Blend Wizard account at my.blendtec.com.
- 2.Edit the secured profile, selecting the option to turn off the secure blender mode, or create a new profile with the secure blender mode turned off.
- 3.Import the profile to a USB drive, and then follow the instructions to import the file to the blender.

Exporting and Transferring Profiles

To export profiles and transfer them to the Blend Wizard, complete the following steps:

- 1.Ensure the profile you want to export is the active profile on the blender.
- 2.Locate the USB port on the bottom of the blender.
- 3.Plug the USB flash drive into the blender's USB port.

Note: If the blender is in manual or automatic operation mode, the USB flash drive menu will automatically load on the screen. If the blender is in programming mode, go to the main menu and select USB Flash Drive.

- 4.Use button 1 to scroll to Export Active Profile and press button 5 to select.
- 5.Press button 5 again to confirm or pulse button to cancel and return to the previous menu.

6. After the export is complete, remove the USB flash drive.
7. Insert the USB flash drive into a computer, and log in to the Blend Wizard (my.blendtec.com). Follow the instructions on the site to transfer the profile to your account.

4.3.4 Blender Statistics

Blend Cycle Counts

You can review the total number of cycles run and the number of cycles run for each button.

1. Press and hold buttons 2 and 4 for 1 second to enter the menu.
2. Use button 1 to scroll through the menu and then button 5 to select Cycle Counts.
3. Use button 1 to scroll and see the number of cycles run in each category.
4. Press pulse button to cancel and return to the previous menu.

Note: The counts for pulse cycles increment on a different basis. Time accumulates each time the pulse button is pressed. The count will increment after the first 0.5 seconds of pulse time, and every 20 seconds of pulse time thereafter.

Diagnostic Error Log

You can review the diagnostic errors that have been logged on the blender.

1. Press and hold buttons 2 and 4 for 1 second to enter the menu.
2. Use button 1 to scroll through the menu and then button 5 to select Diagnostic Counts.
3. Use button 1 to scroll and see the number of errors in each category.
4. Press pulse button to cancel and return to the previous menu.

Exporting Blender Statistics

Exporting blender statistics (cycle counts, errors, settings and firmware versions) is a way to save diagnostic information, which Blendtec's customer service and repair experts will use if problems arise with your blender.

To export blender statistics to a USB drive, complete the following steps:

1. Locate the USB port on the bottom of the blender.
2. Plug the USB flash drive into the blender's USB port.

Note: If the blender is in manual or automatic operation mode, the USB flash drive menu will automatically load on the screen. If the blender is in

programming mode, go to the main menu and select USB Flash Drive.

3. Use button 1 to scroll to Export Counts and press button 5 to select. You will be asked if you want to export counts to the ICBUCNTS.CSV file.

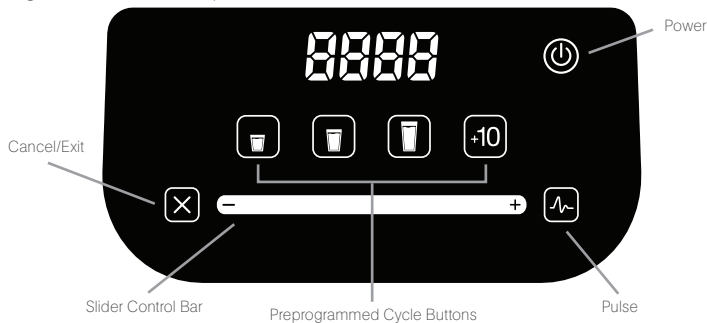
4. Press button 5 again to confirm and start the export process, or pulse button to cancel and return to the previous menu.

5. After the export process is finished, remove the USB drive from the blender

4.4 CHEF 775™

Quick Start Guide

- 1. Touch the power icon to turn on the blender.
- 2. Place the blender jar on the motor base, ensuring the jar is completely seated and the jar lid is secured.
- 3. On the control surface, touch the desired blend cycle icon, pulse icon or desired location on the slider control bar.
- 4. Touch the cancel/exit icon to stop a blend cycle or manual operation before the programmed time elapses.



One-Touch Controls

Operating the Chef 775 couldn't be easier. Presets for Small, Medium and Large beverages make it easy for anyone to operate with little training. Each setting shuts off automatically, and a Pulse button provides a quick burst of needed speed and power.

8-Speed Capacitive Touch Slider + Pulse

The capacitive touch slider provides seamless precision speed control; simply slide your finger to adjust your blender's speed. The Pulse function adds a burst of speed and power.

“Add 10” Function

The “Add 10” icon allows users to add 10-second intervals to blend cycles, providing completely customized blends. It also acts as a stand-alone 10-second cycle.

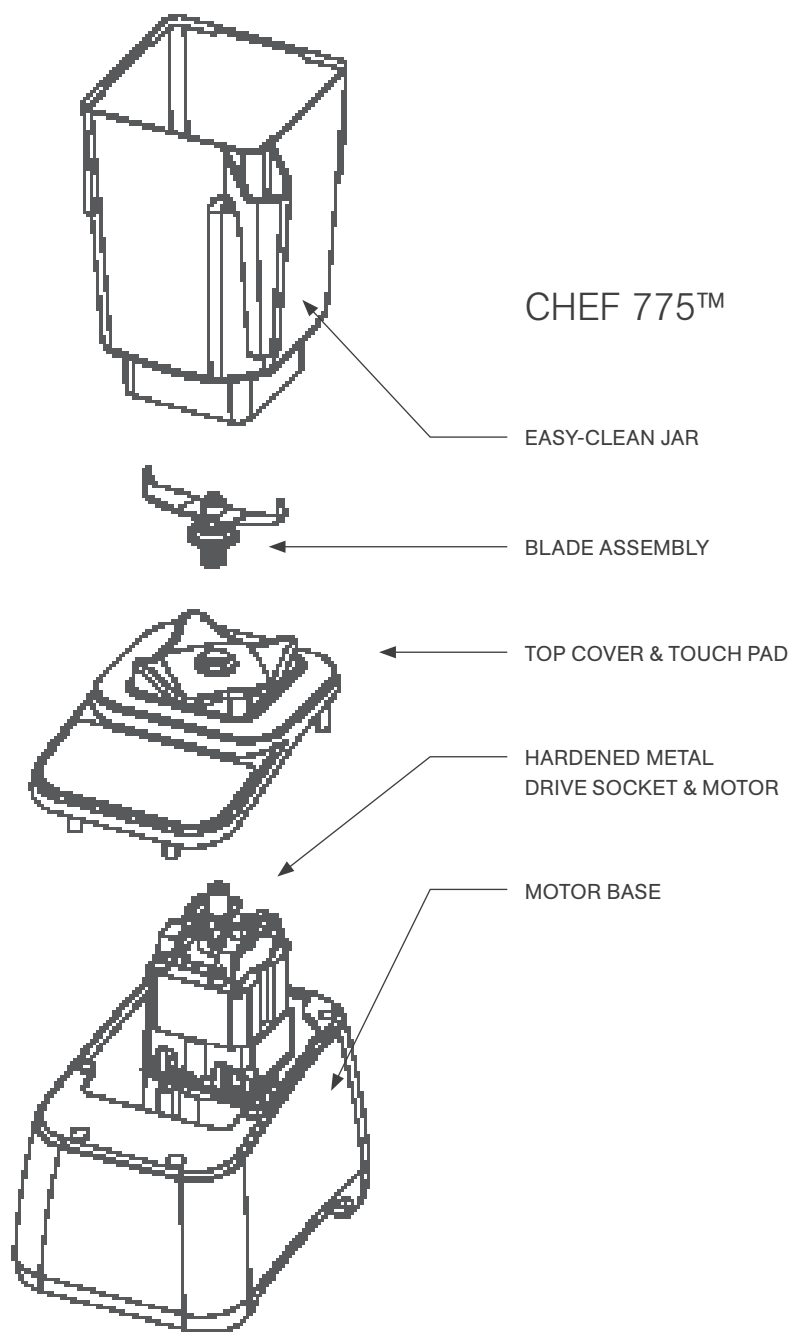
Chef Series Profile Configuration

Changing profile configurations on the Chef Series blenders can be done within the first 10 seconds after the blender is plugged in. The blender profile is configured by holding a specific combination of 3 buttons (shown below) for 2.5 seconds within the 10 second window after plugging in and powering on the blender into ready mode.

- Multipurpose 1 Profile.....Cancel, Small, Medium
- Multipurpose 2 Profile.....Cancel, Medium, Large
- Multipurpose 3 Profile.....Cancel, Large, +10

Once configured, the profile will be displayed for 1 second before returning to ready mode.

- bt_1 = Multipurpose 1: best for blended coffee and pour over ice smoothies
- bt_2 = Multipurpose 2: best for whole fruit and frozen fruit smoothies
- bt_3 = Multipurpose 3: best for thick blends and milkshakes



4.5 EZ 600™

Quick Start Guide

- 1. Toggle the power switch on the back of the motor base.
- 2. Place the blender jar on the motor base, ensuring the jar is completely seated and the jar lid is secured.
- 3. On the control surface, touch the desired blend cycle icon or pulse icon.
- 4. Push any blend cycle button to stop a blend cycle before the programmed time elapses.



Blender Modes

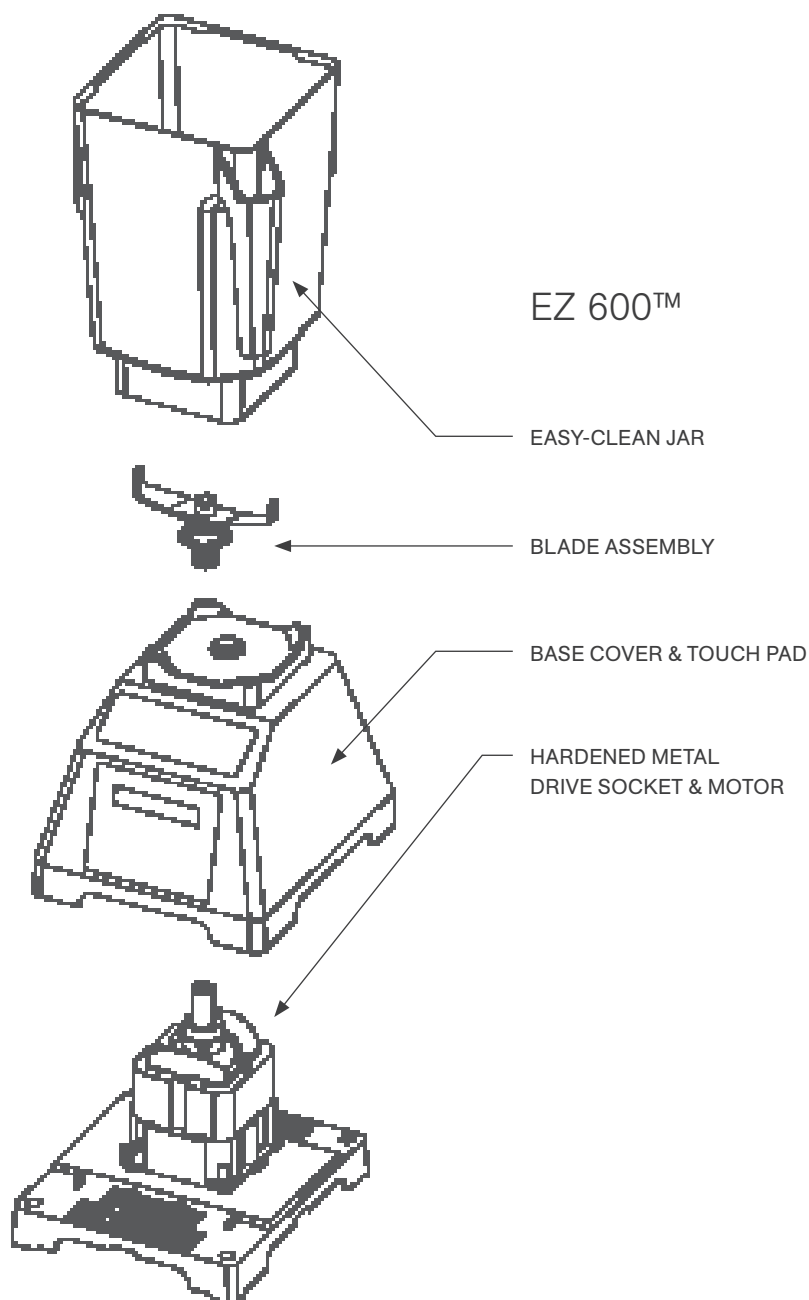
The EZ 600 includes three profiles that can be changed when first turning on the blender. In order to change between modes:

- 1. Turn on the blender.
- 2. Within 10 seconds of the blender being in idle mode (where it displays cycle count) enter the code for the desired mode:
 - Multipurpose 1 profile.....Small, Medium, Large.
 - Multipurpose 2 profile.....Medium, Large, Pulse
 - Multipurpose 3 profile.....Large, Pulse, Small
- 3. When the code is entered successfully, the blender will store the new mode, and then return to the idle screen.
 - Multipurpose 1: best for blended coffee and pour over ice smoothies
 - Multipurpose 2: best for whole fruit and frozen fruit smoothies
 - Multipurpose 3: best for thick blends and milkshakes

Pulse Function

The Pulse button is used for chopping, mincing, whipping or other momentary tasks that do not require a long blend cycle. You can also use the Pulse button to quickly stir a blend before serving.

The Pulse setting runs at speed 7 and will only run while the Pulse button is held down. When the button is released, the motor shuts off.



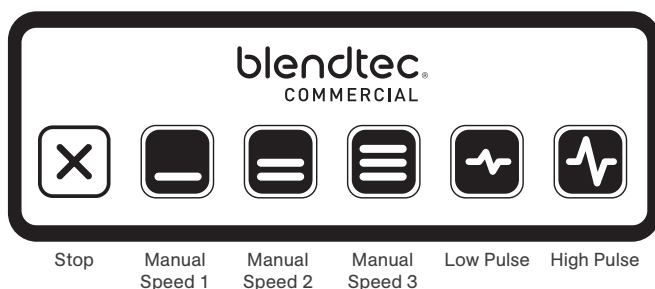
4.6 CHEF 600™

Quick Start Guide

1. Toggle the power switch on the back of the motor base.
2. Place the blender jar on the motor base, ensuring the jar is completely seated and the jar lid is secured.
3. On the control surface, touch the desired speed setting.

Interface

All manual speeds count up to 90 seconds then stop. To stop a blender cycle before the 90 seconds elapses, press the Stop button.



Pulse Function

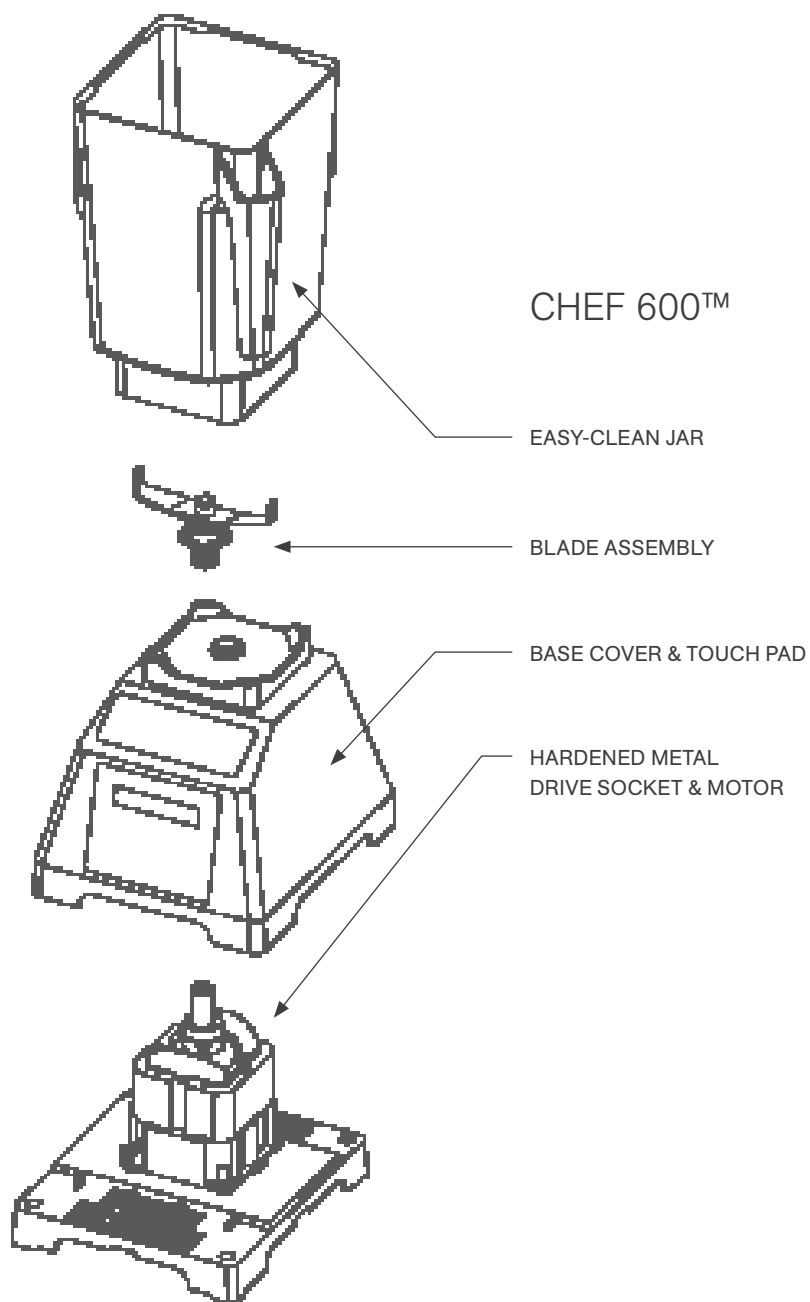
The Pulse button is used for chopping, mincing, whipping, or other brief tasks that do not require a long blend cycle. You can also Pulse to quickly stir a blend before serving.

For greater flexibility, the Chef 600 offers two different pulse settings.

- Low Pulse: Use for chopping or mixing fragile ingredients
- High Pulse: Use for blending and pureeing.

To use the Pulse function:

- Press the desired Pulse button (Low or High). The blender will run at the Pulse setting's speed while the button is depressed.
- When the pulse button is released, the motor shuts off (unless the button is held down in the middle of a blend cycle).
- When using the Pulse setting in the middle of a manual blend cycle, the cycle speed will resume once the Pulse button is released.



SECTION 5: CARE AND CLEANING

5.1 CLEANING AFTER USE

1. Add hot water and 1-2 drops of liquid dish soap to the blender jar.
2. Place the lid tightly onto the jar, place the jar on the motor base and press and hold the pulse button for 5-10 seconds.
3. Rinse all soap from the jar and lid with water.
4. If the jar is stored upside down, shake excess water from the jar after cleaning.

Note: WildSide+™ and FourSide™ jars can be stacked to save space.

5.2 LONG-TERM SANITATION

1. Sanitize the jar per local code by filling the blender jar with a sanitizer diluted to the manufacturer's specifications. Bleach, properly diluted, can be used.
2. Leave the diluted sanitizer in the jar for 5 minutes.
3. Empty the sanitizer from the jar.
4. Rinse jar thoroughly with water.
5. If the jar is stored upside down, shake excess water from the jar after cleaning.

5.3 MOTOR BASE AND SOUND ENCLOSURE CLEANING

- Ensure the blender is unplugged before cleaning.
- Wipe down the plastic housing of the motor base, gaskets, metal top and sound enclosure with a clean, damp rag. A mild, all-purpose, nonabrasive cleaner may be used.
- The drive socket can be cleaned using a cotton swab or toothpick.
- For Stealth blender models, the sound enclosure can also be removed for cleaning, when necessary.
 - Open the sound enclosure lid and use both hands to pull outward on the lid at the pivot joints. This step will flex the plastic enough for it to spread and clear its mounting tabs.
 - The sound enclosure base can be removed in a similar fashion by pulling outward at the base of the sound enclosure and flexing the outer walls enough to clear the mounting tabs.

5.4 CLEANING TIPS AND CAUTIONS

- Do not use stiff bristled brushes or abrasive cloths/pads to clean the blender base, jar or sound enclosure as this will dull or scratch the surface.
- Do not use a water jet of any kind to clean the motor base.
- NEVER submerge the motor base in water. Doing so will void the warranty.
- Avoid submerging blender jars for more than 5 minutes. Water penetration through the lower jar seals will reduce the life of the jar.

SECTION 6: TROUBLESHOOTING

While we don't expect you to have any problems with your blender, sometimes failures do occur. Use the following guidelines to see if the problem is easily fixed or requires service.

6.1 BLENDER MOTOR WILL NOT TURN ON (NO POWER)

If the blender motor will not turn on, try the following:

- For the Stealth 875 and Chef 775 look to see if the control surface has an illuminated power icon, for the Stealth 885, Connoisseur 825, EZ 600 and Chef 600 determine if the Liquid Crystal Display (LCD) is lit. Absence of those indicators indicates a lack of power to the unit.
- Check your circuit breaker switch or fuse to make sure it is set to the ON position.
- Unplug the power cord from the wall receptacle, wait 5 seconds, then plug power cord back in.

6.2 ERROR MESSAGES ON DISPLAY

STEALTH 875™/STEALTH 885™

Touch Error — This indicates that more than one touch sensor on the blender has been touched. To avoid this message, touch the center of the desired button. If this icon remains on when no one is touching the touch area, unplug and re-plug in the blender. If the problem persists please contact your Blendtec Service Agent.

Overtemp Error — This indicates that the motor is overheating. The blender has been disabled until the unit cools to operating temperatures. If the blender does not work after 20 minutes or more of cooling time, please call your Blendtec Service Agent.

Overload Error — This indicates an overload on the motor.

1. Clear the error message by pressing any button or turning the blender off and on again.
2. Remove the jar, and run the blender to determine whether the issue relates to the jar or the motor.
3. With the jar removed, check for blockage in or around the socket on the motor base and the blade assembly on the jar.
4. Place the jar securely on the motor base, and touch to pulse the blade through the mixture.
5. Ensure the jar is not loaded with excessively hard or thick ingredients.

If overload condition re-occurs, contact your Blendtec service agent.

Reset Errors — If the following error messages appear, reset the error by pressing the cancel button or cycle the power by unplugging your blender and then plugging it back in. If the error does not clear, contact your Blendtec service agent.

- Error: Overtemp. condition detected
- Error: Overload condition detected
- Error: Temp. sensor not detected
- Error: Zero crossing not detected
- Error: Reset error detected
- Error: Read / Write error detected
- Error: Motor control error detected
- Error: Invalid blend cycle
- Error: Touch controller not detected

- Error: Touch controller output is invalid

CONNOISSEUR 825™

Overtemp Error — This indicates that the motor is overheating. The blender has been disabled until the unit cools to operating temperatures. If the blender does not work after 20 minutes or more of cooling time, please call your Blendtec Service Agent.

Overload Error — This indicates an overload on the motor.

1. Clear the error message by pressing any button or turning the blender off and on again.
2. Remove the jar, and run the blender to determine whether the issue relates to the jar or the motor.
3. With the jar removed, check for blockage in or around the socket on the motor base and the blade assembly on the jar.
4. Place the jar securely on the motor base, and touch to pulse the blade through the mixture.
5. Ensure the jar is not loaded with excessively hard or thick ingredients.

If overload condition re-occurs, contact your Blendtec service agent.

A "Watchdog Timeout" error indicates a disruption in the normal operation of the electronic blender controls. This is an uncommon error message, which is usually caused by incoming power fluctuations or spikes. This error message is cleared by turning off the blender for 10 seconds (using the switch), then turning back on. If this error is displayed immediately on start-up, or if it occurs regularly during normal use contact your Blendtec service center for assistance.

CHEF 775™



Overtemp Error — This indicates that the motor is overheating. The blender has been disabled until the unit cools to operating temperatures. If the icon does not disappear after 20 minutes or more of cooling time, please call your Blendtec Service Agent.



Touch Error — This indicates that more than one touch sensor on the blender has been touched. To avoid this message, touch the center of the desired button. If this icon remains on when no one is touching the touch area, unplug and re-plug in the blender. If the problem persists please contact your Blendtec Service Agent.

Overload Error — This indicates an overload on the motor.



1. Clear the error message by pressing any button or turning the blender off and on again.
2. Remove the jar, and run the blender to determine whether the issue relates to the jar or the motor.
3. With the jar removed, check for blockage in or around the socket on the motor base and the blade assembly on the jar.
4. Place the jar securely on the motor base, and touch to pulse the blade through the mixture.
5. Ensure the jar is not loaded with excessively hard or thick ingredients.

If overload condition re-occurs, contact your Blendtec service agent.

Reset Errors — If this message appears on the LED information center it indicates

- E-04** there has been an error. There are error messages from E-01 through E-06. If any of these errors appear, press the cancel/exit button to clear the message. If the error message reappears please contact your Blendtec Service Agent.

EZ 600™/Chef 600™

Overtemp Error — This indicates that the motor is overheating. The blender has been disabled until the unit cools to operating temperatures. If the blender does not work after 20 minutes or more of cooling time, please call your Blendtec Service Agent.

Overload Error — This indicates an overload on the motor.

1. Clear the error message by pressing any button or turning the blender off and on again.
2. Remove the jar, and run the blender to determine whether the issue relates to the jar or the motor.
3. With the jar removed, check for blockage in or around the socket on the motor base and the blade assembly on the jar.
4. Place the jar securely on the motor base, and touch to pulse the blade through the mixture.
5. Ensure the jar is not loaded with excessively hard or thick ingredients.

If overload condition re-occurs, contact your Blendtec service agent.

6.3 NOISE LEVEL CHANGES

If the blender noise level has increased from original levels, determine whether the sound is coming from the blender motor or jar.

1. **Blender Motor:** Remove the jar from the motor base and run the motor. If it is excessively noisy, contact your Blendtec service center for evaluation.
2. **Jar:** After checking the motor, place the jar back on the motor with about 16 oz (475 ml) of water. Run the motor for a few seconds using the pulse button. (If you have more than one jar, test a different jar to determine whether the sound is different.) If a jar is excessively noisy or if the blade assembly seems loose or sounds "gravelly" when turned by hand, contact your Blendtec service center.

6.4 NOT BLENDING OR UNSATISFACTORY BLENDED TEXTURE

If the your blender has stopped blending or if the blended texture of product is lumpy or uneven, do the following:

1. Ensure the mixture is not cavitating during the cycle. Cavitation is a condition in which an air pocket forms within the drink mix because the mix is too cold or too solid. The blender blade then spins freely in this cavity. This problem can be corrected by increasing the mix temperature by either reducing ice, increasing liquid and/or ensuring that the frozen ingredients used in the recipe are never colder than 10 °F (-12 °C).
2. If the recipe is mixing well but has not had enough time for complete blending, increase cycle time. Try a longer cycle or touch and hold the Pulse button for the required extra blending time.
3. Make sure the jar is fully seated on the blender base.
4. Check if the blade is firmly affixed to the drive shaft. Hold the drive shaft in one

hand and try to spin the blade with the other hand. If the blade turns without turning the drive shaft, contact your Blendtec customer service agent.

5. TRIED EVERYTHING? If none of the preceding suggestions work, contact your Blendtec service agent for further assistance.

6.5 UNRESPONSIVE CONTROL SURFACE

If the control surface of your blender is not responding, wipe it down with a damp rag to remove any liquids or particle buildup. If that doesn't work, unplug the power cord and then plug it in again.

INSTRUCTIONS THAT APPEAR IN THIS USER GUIDE ARE NOT MEANT TO COVER EVERY POSSIBLE CONDITION OR SITUATION THAT MAY OCCUR. GOOD JUDGMENT MUST BE USED WHEN OPERATING THIS OR ANY OTHER MACHINERY.

SECTION 7: WARRANTY

7.1 WARRANTY DESCRIPTION

Blendtec warrants your blender against defects in materials and workmanship under normal use, maintenance, and service for 1–3 years* on parts and labor required to repair or replace components that, in the sole opinion of Blendtec, are defective. Discontinued items, limited edition items, or color selections will be replaced with the closest equivalent current product. In order to honor your warranty, Blendtec will require a serial number, model number, and proof of purchase from an authorized dealer at the time of the claim. In addition, the serial number label on the unit must remain intact and unaltered or the warranty is void. The following items are not included the blender warranty coverage:

- Normal maintenance, adjustments and cleaning as outlined in this manual.
- Repairs due to unauthorized service or modifications to the blender, product tampering or use of non-standard parts or accessories without prior written approval from Blendtec.
- Damage cause by: improper installation or ventilation of the blender; electrical supply (e.g., electrical power failure, improper electrical connections, the use of extension cords, low voltage or voltage drops to the unit); water supply; drainage; exposure to water; or floods, storms or other acts of God.
- Cost of premium labor rates due to holidays, overtime, shipping, etc.
- Parts or assemblies subjected to misuse, abuse, neglect or accidents or lack of specified maintenance or operational procedures.
- Damage or problems caused by installation, relocation of unit, cleaning and/or maintenance procedures inconsistent with the technical instructions provided in this manual.
- Claims for personal injuries, incidental or consequential damages or economic loss (profit or revenue), however caused.

*Warranty periods vary according to blender model.

7.1.1 Water Damage and Abuse

It is critical to prevent liquids from entering the motor base. The motor base has been designed to deflect liquids from entering. However, in some instances of heavy spillage or a lack of appropriate cleaning procedures, liquids may enter the motor housing. It is important to promptly clean up all spills on the motor, around the counter and under the sound enclosure base (if used). Failure to do so may result in liquids being pulled into the motor, which will lead to premature failure. This cause of failure is considered abuse and is not covered under the warranty.

7.1.2 Country of Purchase

Warranty is provided only in the country in which the equipment was purchased from an authorized sales representative. Use of the equipment outside the country of purchase voids all warranties, expressed or implied. If a customer chooses to utilize a local service center outside of the country of original sale, he or she can reasonably expect to pay for parts, labor, shipping, duties, taxes, etc., necessary to make the repair and return the equipment.

7.1.3 Service Procedure

If you experience any difficulty in using your Blendtec blender and following the troubleshooting steps in Section 7 does not resolve the problem, immediately contact Blendtec customer service at 1-800-BLENDTEC (US customers) or a Blendtec qualified service agent (international customers) to diagnose the problem. Please have your blender's serial number ready and be prepared to describe the problem. Do not attempt to do your own repairs. The warranty will be voided if repairs are made by individuals other than Blendtec qualified service agents. Many issues can be resolved simply and quickly over the phone. If the problem cannot be resolved over the phone, your unit may require replacement.

If your machine is under warranty, Blendtec will repair or replace the blender at no cost. Cosmetic damage and abuse are not included.

If your machine is out of warranty and you wish to have it repaired, contact Blendtec customer service at 1-800-BLENDTEC (US customers) or a Blendtec qualified service agent (international customers) for instructions. You will be responsible for payment of shipping costs, parts for the repair, and labor costs as applicable.

When shipping your blender to Blendtec customer service or a qualified service agent (either in warranty or out of warranty), please include the form on the following page.

THIS WARRANTY IS IN LIEU OF ALL OTHER WARRANTIES OR GUARANTEES OF ANY KIND, EXPRESSED OR IMPLIED, INCLUDING ANY IMPLIED WARRANTY OR MERCHANTABILITY OR FITNESS FOR A PARTICULAR PURPOSE.

In no event shall Blendtec be liable for any special, indirect, incidental or consequential damages. Upon the expiration of the warranty period, Blendtec's liability under this warranty shall terminate. The foregoing warranty shall constitute the sole liability of Blendtec and the exclusive remedy of the customer or user.

Our goods come with guarantees that cannot be excluded under the Australian Consumer Law. You are entitled to a replacement or refund for a major failure and for compensation for any other reasonably foreseeable loss or damage. You are also entitled to have the goods repaired or replaced if the goods fail to be of acceptable quality and the failure does not amount to a major failure.

FORM TO SEND WITH BLENDER FOR REPAIRS/REPLACEMENT

(Please make a copy of this form.)

Name: _____

Company: _____

Store: _____

Address: _____

Phone #: _____

Serial # (found on the underside of the motor base): _____

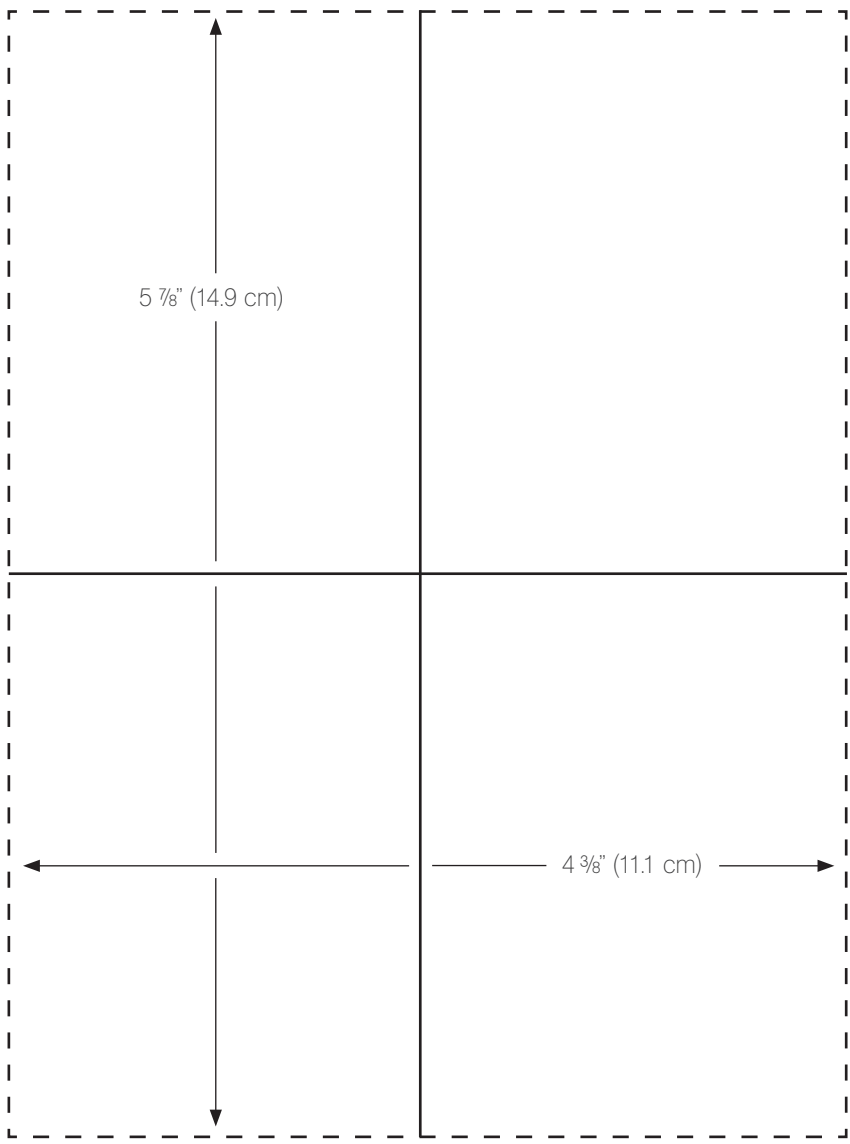
Cycle Count: _____

Purchase Date: _____

Place of Purchase: _____

An explanation of the problem: _____

APPENDIX A - COUNTERTOP HOLE TEMPLATE



ENGLISH



BLENDTEC, INC.
1206 SOUTH 1680 WEST
OREM, UTAH 84058 U.S.A.
1-800-BLENDTEC
BLENDTEC.COM

©2015 BLENDTEC, INC., ALL RIGHTS RESERVED.
OWN-CN-268 A01 Manual, Owners, Commercial,
All Models, US ENG, CA FRE, MX SPA, Aug 2017