

WALDNER
GETREIDEMÜHLEN



LISA

USER GUIDE &
CERTIFICATE OF WARRANTY

GETREIDEMÜHLEN WALDNER BIOTECH GMBH

Kärntnerstraße 62, A-9900 Lienz/Osttirol
+43 (0)4852 70 200, office@waldner-biotech.at

www.waldner-biotech.at

design: aberjung.com

photos: ramonawaldner.com



**We trust in domestic
woods and handcraft 100 %
made in Tyrol.**



GENERAL REQUIREMENTS

This appliance is not intended for use by persons (including children) with reduced physical, sensory or mental capabilities, or lack of experience and knowledge, unless they have been given supervision or instruction concerning use of the appliance by a person responsible for their safety. Children should be supervised to ensure that they do not play with the appliance.

This appliance is intended to be used in household and similar applications such as:

- staff kitchen areas in shops, offices and other working environments;
- farm houses;
- by clients in hotels, motels and other residential type environments;
- bed and breakfast type environments.



ATTENTION: Misuse can cause injuries.



SAFETY: Never immerse the device into water. Only authorized customer service is allowed to perform repairs using original parts and spare parts. If the power cable of this device is damaged, it must be replaced by the manufacturer or its Customer service or a similarly qualified person in order to avoid any danger.

ELECTRIC FLAKER LISA – TECHNICAL DATA



Type of wood

larch, stone pine



Grain crusher output

110g/min



Dimensions H / D

29 / 15,5 cm



Weight

5,5 kg



Volt/Hertz/Watt

230-240 V | 50/60 Hz / 120 W

FT = 17% 10 Min. „ON“ / 50 Min. “OFF”

FT = flaking time

Overload protection with thermal sensors

Certified TÜV quality



COMPONENTS



1. protective cover flaker (removable)
2. hopper
3. squeezer (not visible)

4. output flakes
5. Power button ON / OFF
6. Supply line power plug (not visible)

WHAT TO FLAKE



GRAINS

Oat, spelt, wheat, millet, rye, etc



GRAINS AND SEEDS

sesame, flax seed, etc.



SPICES AND SALTS

fennel, kummel, cilantro, etc.



NOT SUITABLE:

corn, rice, chickpea & soya



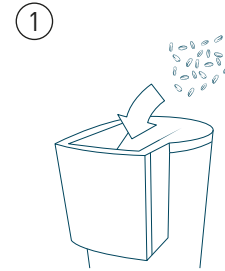
INITIAL OPERATION

INITIAL OPERATION

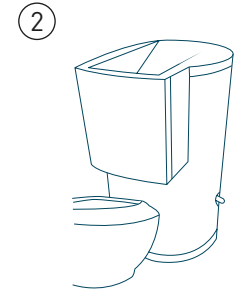
1. Place flaker on a ground surface. **Attention:** Never place the flaker on a hot surface (eg stovetop)
2. Check if supply voltage corresponds to the required voltage for the device
3. Plug power plug into socket.
4. Press power switch to 1.



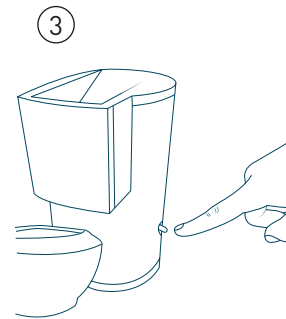
NOTE: Efficiency & result of the grinding depend on the quality of the flaker material. The drier the flaker material, the higher the efficiency.



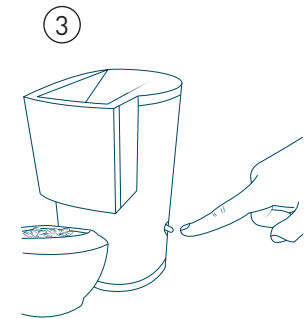
1. Fill flaking material, e.g. oat into the hopper



2. Place a vessel



3. Switch on



4. Switch off after use

MONA

**... ALREADY DA VINCI CONSIDERED
HER AS A MASTERPIECE**



LISA





CLEANING OF THE FLAKER



Clean housing with a soft, damp towel.



Use a brush or hot water to clean the squeezer.



Never use sharp items or chemicals for the cleaning of the housing.

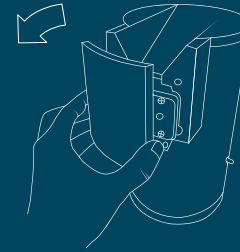


Open the flaker: The device can be opened easily by removing the cover. When closing make sure the cover is in place properly.



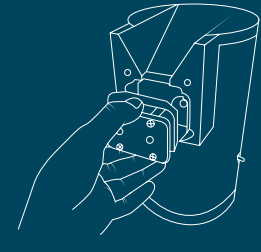
The device is free of service and maintenance. However, keep original packing for possible transport.

①



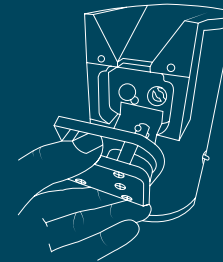
1. Remove the protective cover of the flaker

②



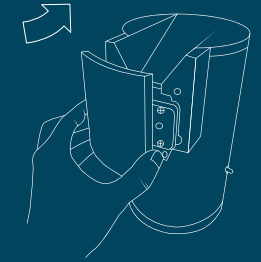
2. Removing the squeezer

③



3. Cleaning with the help of a brush or vacuum cleaner

④



4. Inserting and closing the squeezer

⑤



5. Start using your electric flaker as described on page 5



WARRANTY INFORMATION

1. Terms

The warranty of this device is 5 years from date of purchase (proof of purchase). Any warranty service work will not have an impact on the term. The warranty for spare parts remains intact.

2. Coverage

Within said term all defects in materials or workmanship of the device will be covered. Replaced parts remain our property. The customer will be charged for transport of the device. Transport is at customer's risk. Any damages during the transport have to be reported immediately to the carrier. Any further claims are excluded, in particular claims for recession, reduction in price or damages.

Excluded from this warranty are: Regular wear and tear, misuse (eg device not used properly), scarce care and cleaning, nonobservance of the user guide, damages during transport and droppage, also excluded are damages due to non corresponding power supply and also damages caused by unauthorized third parties.

3. Area of validity


Warranty services will be covered in the country of purchase. The warranty is solely valid if the device was purchased by our defined chain of distribution. For devices which were purchased in one European Union country and delivered to another European Union country the warranty services are subject to the country's specific warranty conditions. There will be an obligation for warranty services just in case the device meets the technical requirements of the country in which the warranty service will be executed.





WARRANTY

Waldner biotech GmbH grants a warranty of **5 years** from date of purchase (proof of purchase) for your device according to following conditions:



Type:
LISA - flaker

Waldner biotech GmbH guarantees that this device fulfills within the term of the warranty the purpose of use according to compliance with the user guide and to proper care and cleaning. The customer agrees to check immediately after purchase the conditions and functionality of the device and to report possible defects immediately to vendor. Only authorized customer service is allowed to render all type of services. Proof of purchase is always required for any desired service.